

	MONTHLY AVERAGES (CDN\$/Metric Tonne)																		# of Muni. (Monthly Change)	Price Range (CDN/Metric Tonne)
	June 2017	July 2017	Aug 2017	Sept 2017	Oct 2017	Nov 2017	Dec 2017	Jan 2018	Feb 2018	Mar 2018	Apr 2018	May 2018	June 2018	July 2018	Aug 2018	Sept 2018	Oct 2018	Nov 2018		
Newspaper (ONP #8 / SRP #56) ¹	112	129	122	111	84	83	85	88	83	72	54	48	49	55	64	54	61	54	8 (2)	35 - 73
Mixed Paper #54 / ONP#6 ²	83	96	89	75	33	29	36	33	25	18	2	(2)	(3)	(13)	(11)	(8)	(7)	(6)	6 (0)	(30) - 8
Corrugated (OCC)	249	262	255	243	161	163	165	160	147	147	130	120	119	120	121	118	120	119	11 (1)	110 - 123
Hardpack (OBB/OCC)	136	155	153	143	78	81	73	86	65	74	57	57	51	49	44	53	49	54	4 (0)	17 - 83
Boxboard (OBB)	na	na	na	na	na	na	na	na	na	na	na	na	na	na	na	na	na	na	3 (0)	na
Polycoat Containers	61	43	49	29	35	53	38	45	46	42	50	70	65	84	72	85	79	67	9 (1)	40 - 85
PET (mixed)	439	444	452	440	396	352	352	342	351	373	390	416	455	475	486	469	479	462	14 (1)	396 - 503
HDPE (mixed)	439	419	444	446	489	530	472	434	464	496	531	527	469	435	468	461	492	492	14 (3)	440 - 526
Plastic Tubs & Lids	na	na	na	na	na	na	na	na	na	na	na	na	na	na	na	na	na	na	3 (1)	na
Mixed Plastics ³	34	35	32	24	24	21	25	30	39	43	40	49	52	49	46	44	48	57	10 (-2)	40 - 97
Film Plastic	33	37	32	18	13	20	19	11	15	16	14	18	18	15	18	15	16	13	6 (2)	5 - 15
Aluminum Cans	1721	1666	1729	1751	1809	1791	1681	1723	1756	1788	1828	1994	2044	1923	1847	1643	1526	1388	13 (1)	1190 - 1557
Steel Cans	275	263	262	254	228	232	258	283	280	320	345	341	342	343	326	298	314	332	14 (1)	282 - 364
Glass (mixed)	(44)	(41)	(42)	(42)	(43)	(43)	(50)	(53)	(56)	(49)	(42)	(35)	(36)	(35)	(39)	(41)	(26)	(39)	9 (2)	(80) - (24)
Composite Index	161	172	168	159	128	126	126	129	125	124	114	114	116	118	121	112	117	110		
Fibre Composite Index⁴	139	155	148	137	98	97	99	103	95	87	70	64	64	68	74	67	72	67		
Container Composite Index⁵	223	220	225	221	214	208	200	205	210	226	239	256	263	259	256	238	244	232		

	YEARLY AVERAGES (CDN\$/Metric Tonne)																	
	2001	2002	2003	2004	2005	2006	2007	2008	2009	2010	2011	2012	2013	2014	2015	2016	2017	2018
Newspaper (ONP #8 / SRP #56) ¹	76	100	99	114	101	89	118	121	72	90	126	76	71	69	72	103	111	62
Mixed Paper #54 / ONP#6 ²															43	73	73	3
Corrugated (OCC)	55	106	89	114	95	80	131	111	68	149	173	133	131	131	127	152	221	129
Hardpack (OBB/OCC)	38	63	62	75	68	50	89	76	42	74	95	61	53	51	66	91	121	58
Boxboard (OBB)			43	62	53	41	70	62	26	61	84	62	46	48	50	50	na	na
Polycoat Containers	57	58	64	67	66	59	84	75	39	105	127	96	65	79	114	114	64	64
PET (mixed)	324	166	278	432	507	314	368	352	187	391	652	431	372	377	295	265	383	427
HDPE (mixed)	257	233	364	428	683	565	524	573	320	464	562	552	497	659	617	533	497	479
Plastic Tubs & Lids	5	0	12	51	104	128	146	204	22	54	247	265	na	na	na	na	na	na
Mixed Plastics ³											48	32	38	46	58	61	32	45
Film Plastic	26	0	8	55	148	137	51	35	3	13	25	23	14	29	47	40	24	15
Aluminum Cans	1700	1709	1619	1772	1763	2169	2065	1904	1215	1591	1790	1516	1523	1783	1548	1576	1772	1769
Steel Cans	26	47	76	191	116	141	168	245	89	263	335	277	257	299	179	200	262	320
Glass (mixed)	(15)	(15)	(19)	(12)	(31)	(31)	(31)	(24)	(18)	(15)	(11)	(18)	(22)	(22)	(30)	(37)	(42)	(41)
Composite Index	95	113	114	131	124	111	145	80	124	169	118	107	117	105	129	154	118	
Fibre Composite Index⁴															77	109	132	75
Container Composite Index⁵															188	184	217	239

Disclaimer: The CIF Price Sheet provides an estimate of the average commodity prices from a sample of municipalities located across Ontario. Please note the estimate in no way represents, reflects or captures all municipal conditions. You acknowledge that in using the CIF Price Sheet neither CIF, nor any of its agents, partners, affiliates, directors, employees, assigns and associates may be held liable, responsible or accountable for any type of damage, litigation or other legal action that may arise directly or indirectly from the reliance on the CIF Price Sheet.

Pricing Notes:

- Paper Stock Industries (PSI) have eliminated the ONP#8 grade specification. For continuity, the new PSI grade specification, Sorted Residential Paper (SRP #56), has been included as it most closely represents the ONP#8 commodity ON municipalities are producing.
- Paper Stock Industries (PSI) have eliminated the ONP#6 grade specification and added a new PSI grade specification, Mixed Paper #54. Mixed Paper has already been captured on the price sheet with the new grade number being added.
- The composition for mixed plastics varies from each municipality based on the range of materials accepted and the specifications from their end markets.
- The Fibre Composite Index is calculated using ONP#8 / SRP#56, Mixed Paper #54 / ONP#6, Corrugated (OCC), Hardpack (OBB/OCC), and Boxboard (OBB).
- Polycoat containers are included in the container composite index and NOT the fibre composite index.

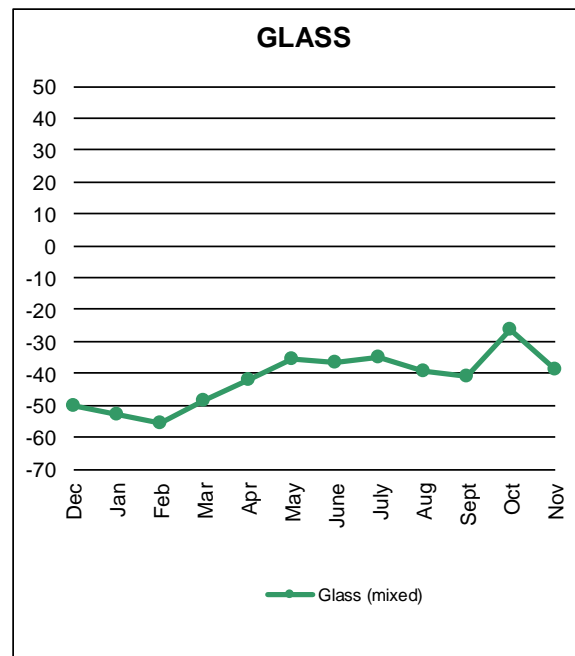
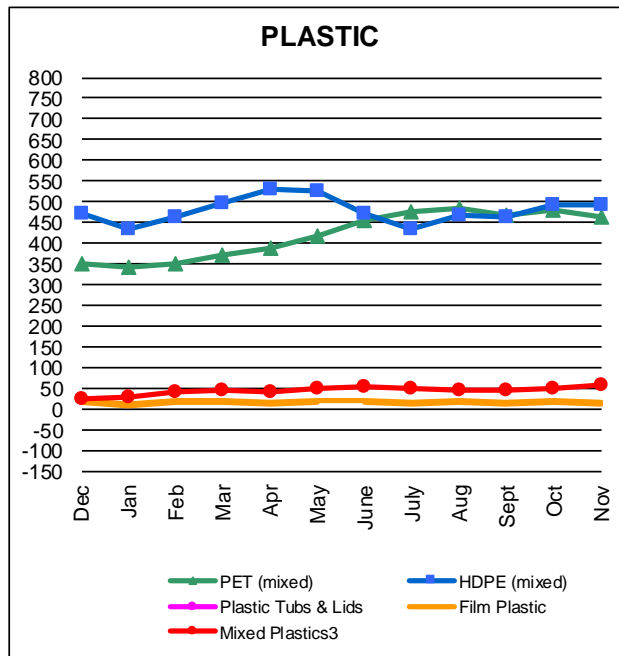
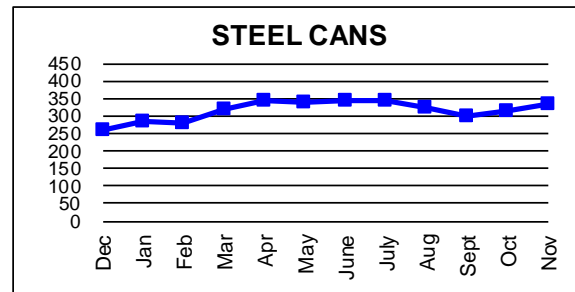
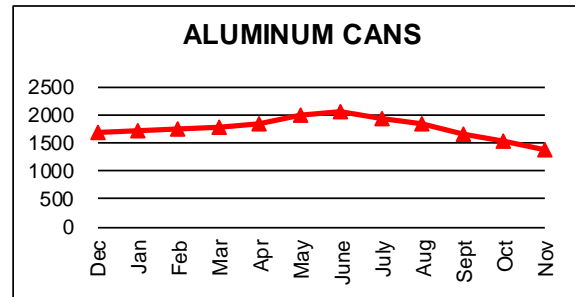
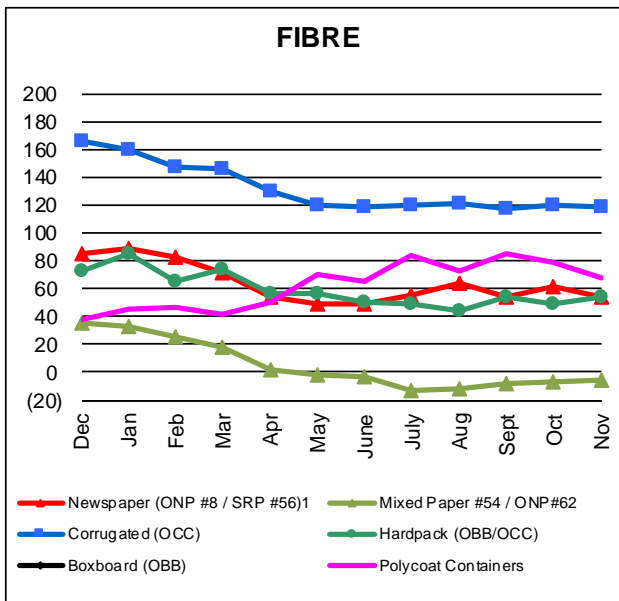
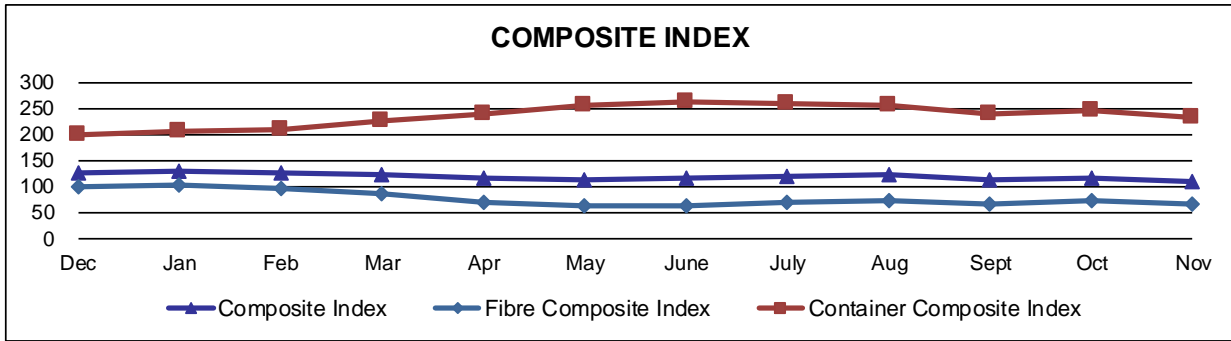
General Notes:

- Prices are for baled post-consumer residential materials except glass, which is loose.
- As of May 2012, prices for all materials are FOB the municipality including glass. Prior to May 2012, prices for glass were delivered prices.
- The Composite Index is calculated using the overall composition of residential Blue Box material recovered and marketed in Ontario as reported from the approved 2016 RPRA (formerly WDO) Datacall with some additional allocations to material categories. Mixed glass includes coloured glass. Composition figures are updated annually. Details available upon request.
- Materials with a listed price of "NA" indicate either an insufficient number of municipalities reported a price in the given month (<4) or variation in the reported price which is not considered representative of Ontario.
- Prices are compiled from a range of municipal programs across Ontario combined with information from industry representatives. Prices may not be the same as actual prices being paid in any given program.
- "Price Range" reflects the second highest and lowest prices used in calculating the average (trim mean). The highest and lowest prices have been excluded to account for outliers/unique local conditions.

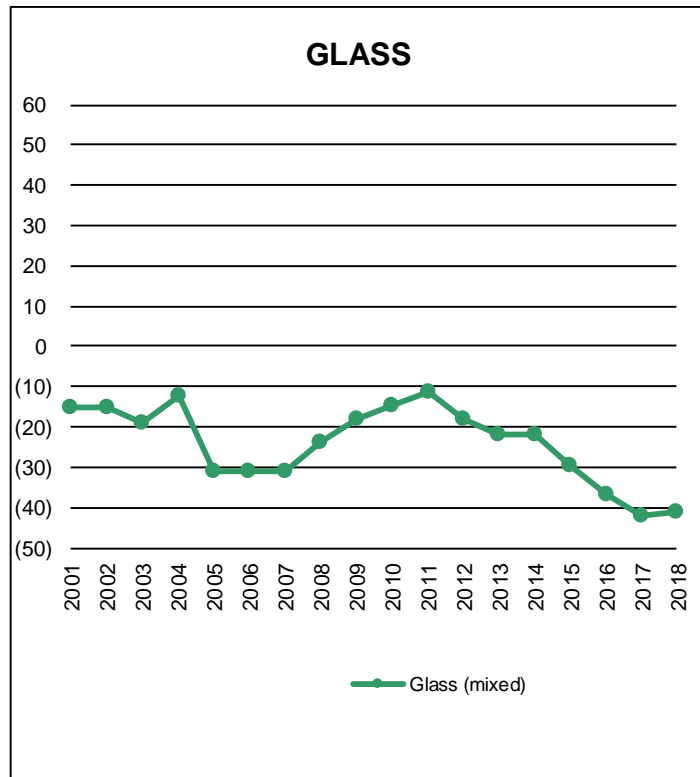
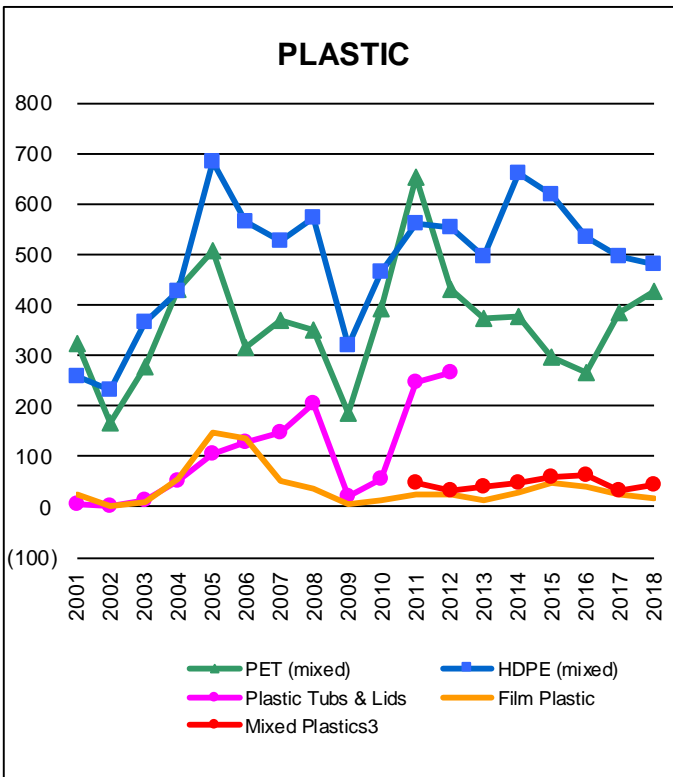
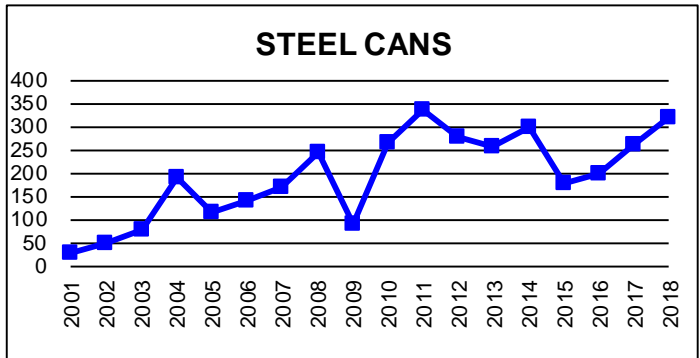
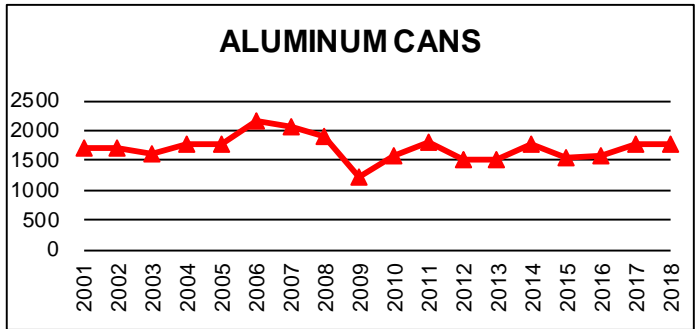
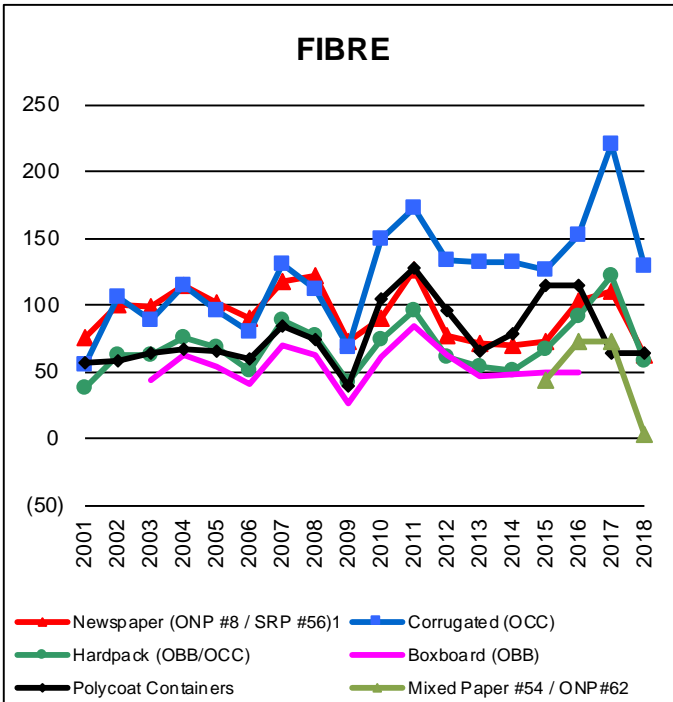
For more information:

Neil Menezes, Reclay StewardEdge
nmenezes@reclaystewardedge.com, 416-644-8349

© CIF 2018



Graphs produced from Monthly Averages Table.



Graphs produced from Yearly Averages Table