

## Price Sheet

### Ontario Market Price Trends for September 2015

MONTHLY AVERAGES (CDN\$/Metric Tonne)																		
	Apr 2014	May 2014	June 2014	July 2014	Aug 2014	Sept 2014	Oct 2014	Nov 2014	Dec 2014	Jan 2015	Feb 2015	Mar 2015	Apr 2015	May 2015	June 2015	July 2015	Aug 2015	Sept 2015
Newspaper (ONP #8)	71	71	69	69	69	68	70	67	62	64	71	70	71	70	70	75	74	77
Mixed Paper / ONP#6	na	na	na	na	na	na	na	na	na	37	28	38	40	37	40	50	52	52
Corrugated (OCC)	141	140	134	131	127	119	121	117	117	118	118	117	117	112	114	133	137	139
Hardpack (OBB/OCC)	53	53	51	50	51	46	48	47	47	51	60	58	58	58	53	74	77	78
Boxboard (OBB)	49	49	48	46	46	47	43	48	52	43	41	44	44	43	47	63	53	53
Polycoat Containers	78	79	77	76	84	85	88	87	95	93	108	108	103	103	108	121	117	116
PET (mixed)	441	458	361	336	323	342	346	355	393	368	343	337	326	298	301	356	382	322
HDPE (mixed)	662	603	610	609	571	673	764	716	698	571	545	623	751	698	648	560	513	496
Plastic Tubs & Lids	na	na	na	na	na	na	na	na	na	na	na	na	na	na	na	na	na	na
Mixed Plastics*	41	49	49	46	47	49	47	53	52	48	49	54	55	60	60	59	59	59
Film Plastic	21	28	32	30	30	30	50	38	53	38	33	43	47	63	55	58	56	49
Aluminum Cans	1782	1794	1758	1813	1831	1840	1852	1840	1924	1877	1931	1787	1653	1457	1284	1394	1377	1460
Steel Cans	305	313	305	310	310	311	296	264	251	265	181	186	184	185	199	211	189	190
Glass (mixed)	(22)	(22)	(22)	(22)	(22)	(22)	(22)	(22)	(22)	(22)	(25)	(25)	(25)	(25)	(27)	(37)	(35)	(33)
<b>Composite Index</b>	<b>122</b>	<b>122</b>	<b>116</b>	<b>115</b>	<b>114</b>	<b>115</b>	<b>118</b>	<b>114</b>	<b>113</b>	<b>108</b>	<b>107</b>	<b>107</b>	<b>108</b>	<b>102</b>	<b>100</b>	<b>108</b>	<b>108</b>	<b>108</b>
<b>Fibre Composite Index<sup>6</sup></b>										<b>69</b>	<b>72</b>	<b>73</b>	<b>74</b>	<b>72</b>	<b>72</b>	<b>81</b>	<b>81</b>	<b>84</b>
<b>Container Composite Index<sup>7</sup></b>										<b>226</b>	<b>210</b>	<b>209</b>	<b>210</b>	<b>193</b>	<b>183</b>	<b>189</b>	<b>187</b>	<b>180</b>

YEARLY AVERAGES (CDN\$/Metric Tonne)																		
	1998	1999	2000	2001	2002	2003	2004	2005	2006	2007	2008	2009	2010	2011	2012	2013	2014	2015
Newspaper (ONP8)	48	76	118	76	100	99	114	101	89	118	121	72	90	126	76	71	69	71
Mixed Paper / ONP#6																		42
Corrugated (OCC)	73	99	112	55	106	89	114	95	80	131	111	68	149	173	133	131	131	123
Hardpack (OBB/OCC)	17	20	65	38	63	62	75	68	50	89	76	42	74	95	61	53	51	63
Boxboard (OBB)						43	62	53	41	70	62	26	61	84	62	46	48	48
Polycoat Containers	26	24	83	57	58	64	67	66	59	84	75	39	105	127	96	65	79	109
PET (mixed)	300	144	326	324	166	278	432	507	314	368	352	187	391	652	431	372	377	337
HDPE (mixed)	226	211	373	257	233	364	428	683	565	524	573	320	464	562	552	497	659	600
Plastic Tubs & Lids	66	3	5	5	0	12	51	104	128	146	204	22	54	247	265	na	na	na
Mixed Plastics*														48	32	38	46	56
Film Plastic	(5)	(12)	7	26	0	8	55	148	137	51	35	3	13	25	23	14	29	49
Aluminum Cans	1595	1608	1893	1700	1709	1619	1772	1763	2169	2065	1904	1215	1591	1790	1516	1523	1783	1580
Steel Cans			52	26	47	76	191	116	141	168	245	89	263	335	277	257	299	199
Glass (mixed)	(25)	(20)	(15)	(15)	(15)	(19)	(12)	(31)	(31)	(31)	(24)	(18)	(15)	(11)	(18)	(22)	(22)	(28)
<b>Composite Index</b>			<b>134</b>	<b>95</b>	<b>113</b>	<b>114</b>	<b>131</b>	<b>124</b>	<b>111</b>	<b>145</b>	<b>150</b>	<b>80</b>	<b>124</b>	<b>169</b>	<b>118</b>	<b>107</b>	<b>117</b>	<b>106</b>
<b>Fibre Composite Index<sup>6</sup></b>																		<b>75</b>
<b>Container Composite Index<sup>7</sup></b>																		<b>198</b>

\* The composition for mixed plastics varies from each municipality based on the range of materials accepted and the specifications from their end markets.

Notes:

- Prices are for baled post-consumer residential materials, except glass, which is loose.
- As of May 2012, prices for all materials are FOB the municipality including glass. Prior to May 2012, prices for glass
- Prices are compiled from a range of municipal programs across Ontario combined with information from industry representatives. Prices may not be the same as actual prices being paid in any given program.
- The Composite Index is calculated using the overall composition of residential Blue Box material recovered and marketed in Ontario as reported from the approved 2013 WDO Datacall with some additional allocations to material categories. Mixed glass includes coloured glass. Composition figures are updated annually. Details available upon request.
- Materials with a listed price of "na" indicate either an insufficient number of municipalities reported a price in the given month (<4) or variation in the reported price which is not considered representative of Ontario
- The Fibre Composite Index is calculated using ONP#8, Mixed Paper / ONP#6, Corrugated (OCC), Hardpack (OBB/OCC), and Boxboard (OBB).
- Polycoat containers are included in the container composite index and NOT the fibre composite index.

*This Project has been delivered with the assistance of the Continuous Improvement Fund.*



This Project is Produced by Reclay StewardEdge

For more information please contact:

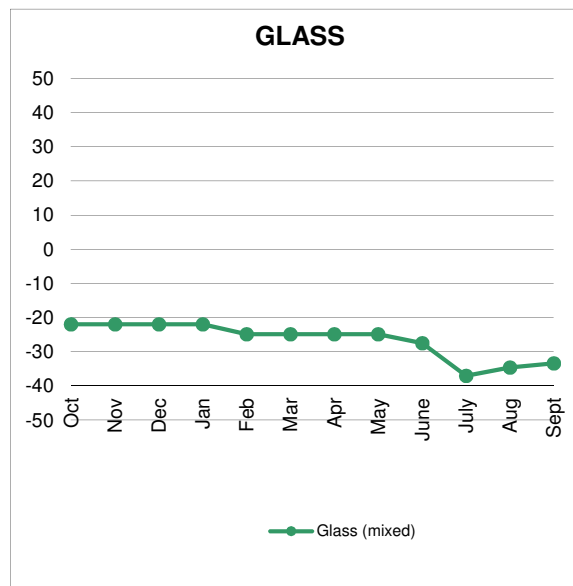
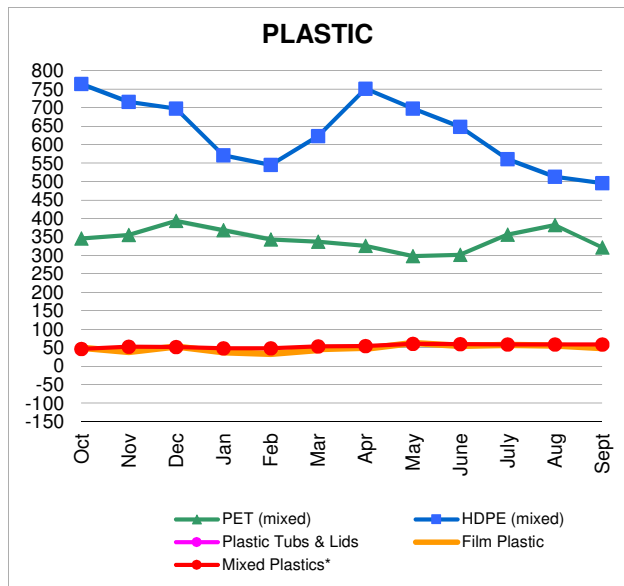
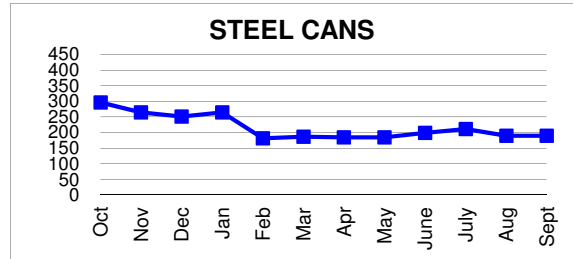
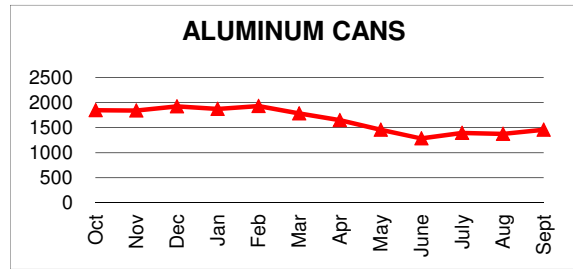
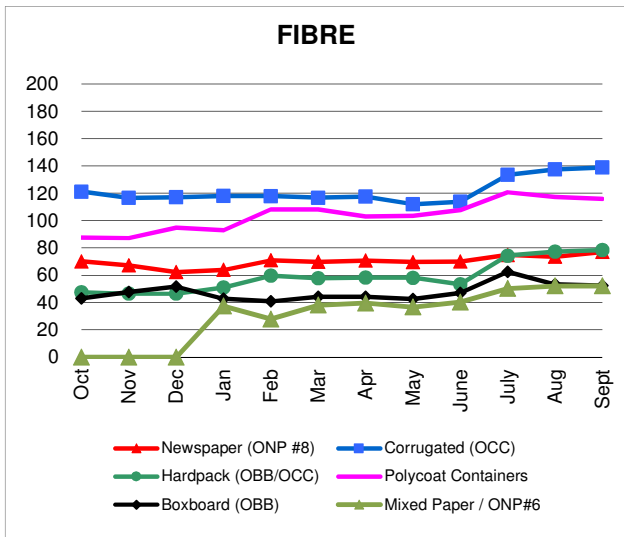
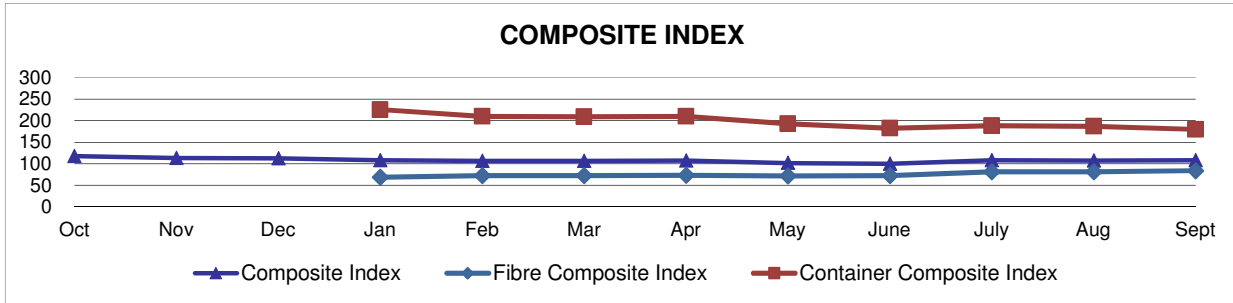
Neil Menezes at 416-644-8349 (Toll-Free: 888-277-2762, Ext. 3989) email: nmenezes@reclaystewardedge.com

Reclay StewardEdge, 26 Wellington Street East, Suite 601, Toronto, Ontario, M5E 1S2

Past editions of *The Price Sheet* are archived on the Reclay StewardEdge website at: <http://reclaystewardedge.com/resources/rse-ontario-price-sheet/>

# Price Sheet

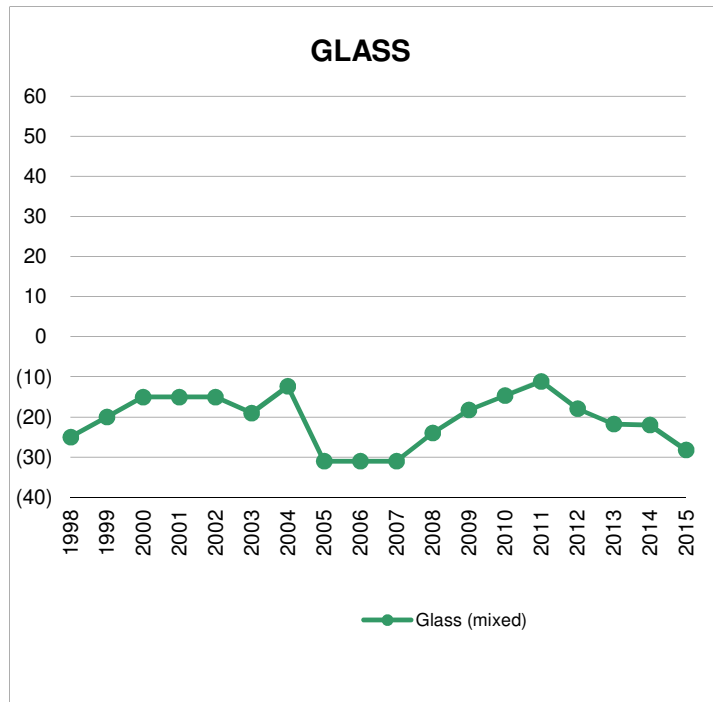
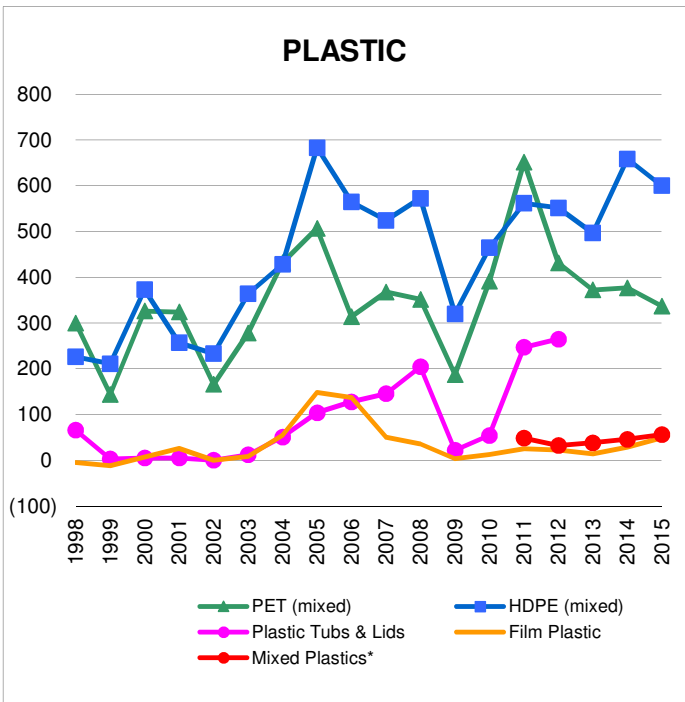
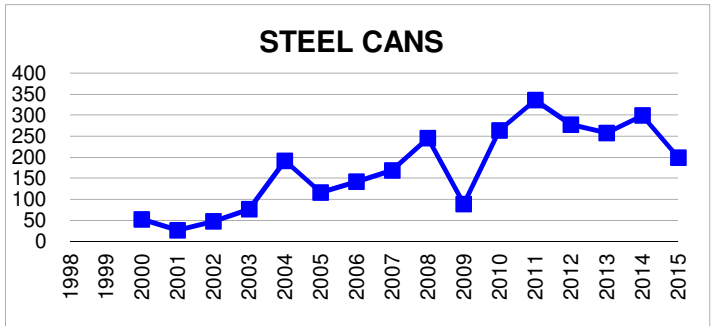
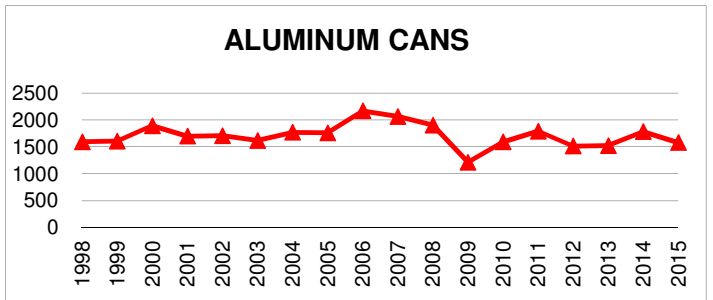
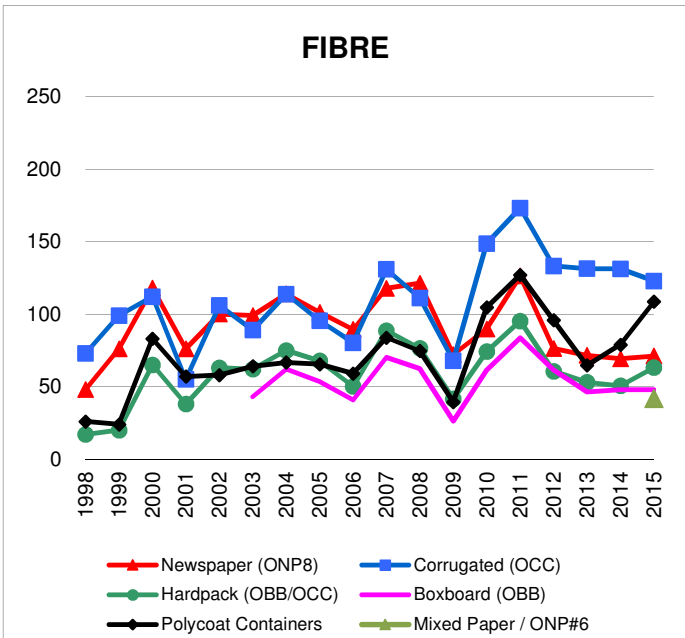
Ontario Monthly Averages from October 2014 to September 2015  
(CDN\$/Metric Tonne)



Graphs produced from Monthly Averages Table.

# Price Sheet

## Ontario Historical Yearly Averages (CDN\$/Metric Tonne)



Graphs produced from Yearly Averages Table