

The Price Sheet

Ontario Market Price Trends for August 2014

MONTHLY AVERAGES (CDN\$/Metric Tonne)

	Mar 2013	Apr 2013	May 2013	June 2013	July 2013	Aug 2013	Sept 2013	Oct 2013	Nov 2013	Dec 2013	Jan 2014	Feb 2014	Mar 2014	Apr 2014	May 2014	June 2014	July 2014	Aug 2014
Aluminum Cans	1589	1555	1583	1539	1470	1519	1481	1481	1487	1485	1556	1663	1747	1782	1794	1758	1813	1831
Steel Cans	270	252	232	230	250	242	242	247	275	301	324	302	294	305	313	305	310	310
Glass (clear)	14	14	na	na	na	na	na	na	na	na	na	na	na	na	na	na	na	na
Glass (mixed)	(21)	(21)	(22)	(22)	(22)	(22)	(22)	(22)	(22)	(22)	(22)	(22)	(22)	(22)	(22)	(22)	(22)	(22)
PET (mixed)	423	426	398	378	366	375	372	340	339	340	348	386	433	441	458	361	336	323
HDPE (mixed)	604	591	476	435	392	391	400	441	535	582	597	683	715	662	603	610	609	571
Plastic Tubs & Lids	na	na	na	na	na	na	na	na	na	na	na	na	na	na	na	na	na	na
Mixed Plastics*	45	39	40	40	40	34	33	40	37	34	35	39	44	41	49	49	46	47
Film Plastic	22	15	15	15	15	10	8	6	7	15	12	12	12	21	28	32	30	30
Polystyrene	na	na	na	na	na	na	na	na	na	na	na	na	na	na	na	na	na	na
Newspaper (ONP #8)	84	85	74	72	71	64	65	67	68	67	69	71	72	71	71	69	69	69
Corrugated (OCC)	130	130	124	126	129	135	140	141	141	131	133	140	156	141	140	134	131	127
Hardpack (OBB/OCC)	61	60	54	54	55	46	53	51	52	48	49	53	60	53	53	51	50	51
Boxboard (OBB)	51	54	38	45	47	44	49	49	45	46	48	50	48	49	49	48	46	46
Polycoat Containers	70	65	65	65	65	65	67	67	61	59	61	64	72	78	79	77	76	84
Composite Index	120	119	108	105	104	101	102	103	106	106	112	118	125	122	122	116	115	114

YEARLY AVERAGES (CDN\$/Metric Tonne)

	1997	1998	1999	2000	2001	2002	2003	2004	2005	2006	2007	2008	2009	2010	2011	2012	2013	2014
Aluminum Cans	1827	1595	1608	1893	1700	1709	1619	1772	1763	2169	2065	1904	1215	1591	1790	1516	1523	1743
Steel Cans				52	26	47	76	191	116	141	168	245	89	263	335	277	257	308
Glass (clear)	47	49	50	50	31	29	34	38	36	36	33	27	26	25	27	21	14	na
Glass (mixed)	(4)	(25)	(20)	(15)	(15)	(15)	(19)	(12)	(31)	(31)	(31)	(24)	(18)	(15)	(11)	(18)	(22)	(22)
PET (mixed)	155	300	144	326	324	166	278	432	507	314	368	352	187	391	652	431	372	386
HDPE (mixed)	447	226	211	373	257	233	364	428	683	565	524	573	320	464	562	552	497	631
Plastic Tubs & Lids	76	66	3	5	5	0	12	51	104	128	146	204	22	54	247	265	na	na
Mixed Plastics*															48	32	38	44
Film Plastic	(4)	(5)	(12)	7	26	0	8	55	148	137	51	35	3	13	25	23	14	22
Polystyrene	125	125	125	125	125	75	75	75	75	75	75	75	75	(16)	(86)	na	na	na
Newspaper (ONP8)	31	48	76	118	76	100	99	114	101	89	118	121	72	90	126	76	71	70
Corrugated (OCC)	97	73	99	112	55	106	89	114	95	80	131	111	68	149	173	133	131	138
Hardpack (OBB/OCC)	5	17	20	65	38	63	62	75	68	50	89	76	42	74	95	61	53	52
Boxboard (OBB)							43	62	53	41	70	62	26	61	84	62	46	48
Polycoat Containers	99	26	24	83	57	58	64	67	66	59	84	75	39	105	127	96	65	74
Composite Index				134	95	113	114	131	124	111	145	150	80	124	169	118	107	118

* The composition for mixed plastics varies from each municipality based on the range of materials accepted and the specifications from their end markets.

Notes:

- Prices are for baled post-consumer residential materials, except glass, which is loose.
- Prices are FOB the municipality except for glass and polystyrene which are delivered. NOTE: As of May 2012, prices for glass are FOB the municipality.
- Prices are compiled from a range of municipal programs across Ontario combined with information from industry representatives. Prices may not be the same as actual prices being paid in any given program.
- The Composite Index is calculated using the overall composition of residential Blue Box material recovered and marketed in Ontario as reported from the approved 2012 WDO Datacall with some additional allocations to material categories. Mixed glass includes coloured glass. ONP8 includes a quantity of lower grade papers sold at lower prices. Composition figures are updated annually. Details available upon request.
- Materials with a listed price of "na" indicate either an insufficient number of municipalities reported a price in the given month (<4) or variation in the reported price which is not considered representative of Ontario

For more information please contact:

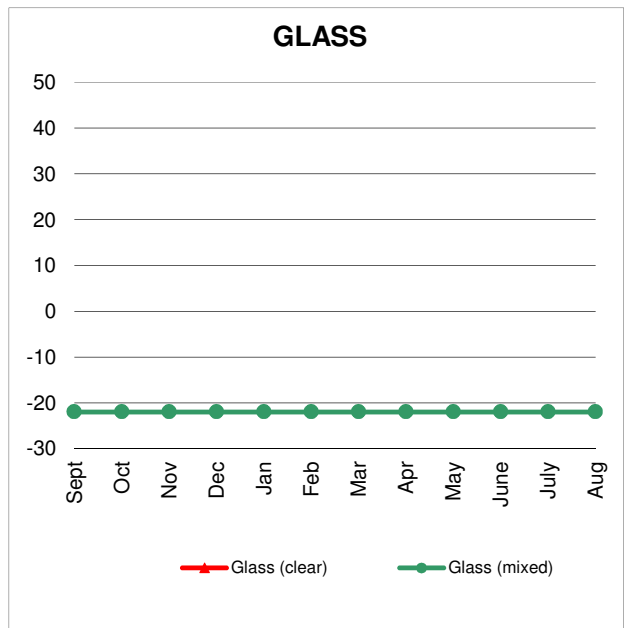
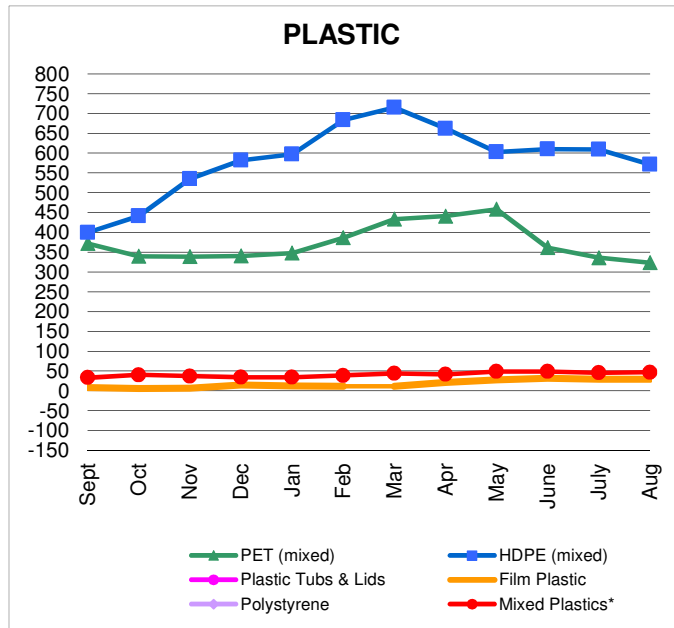
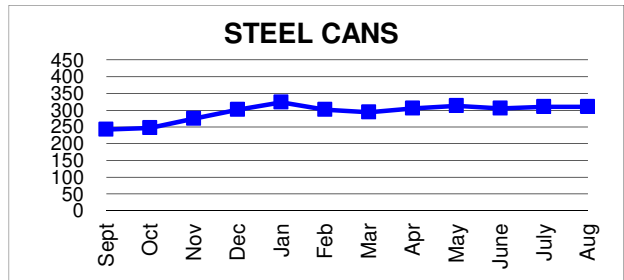
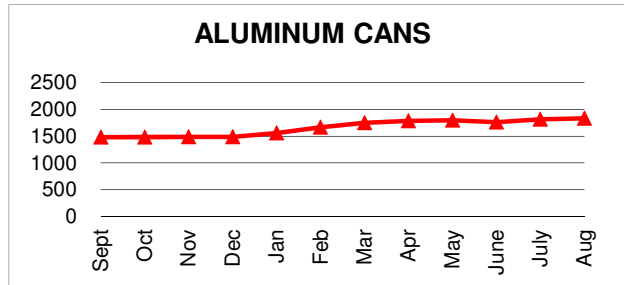
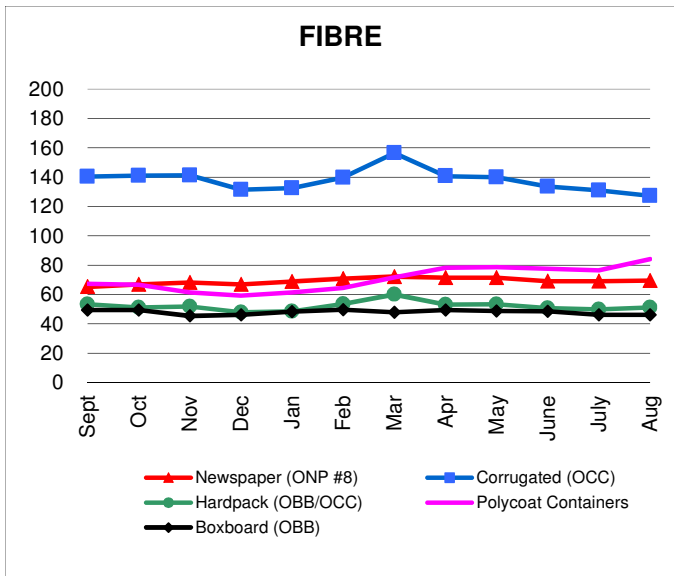
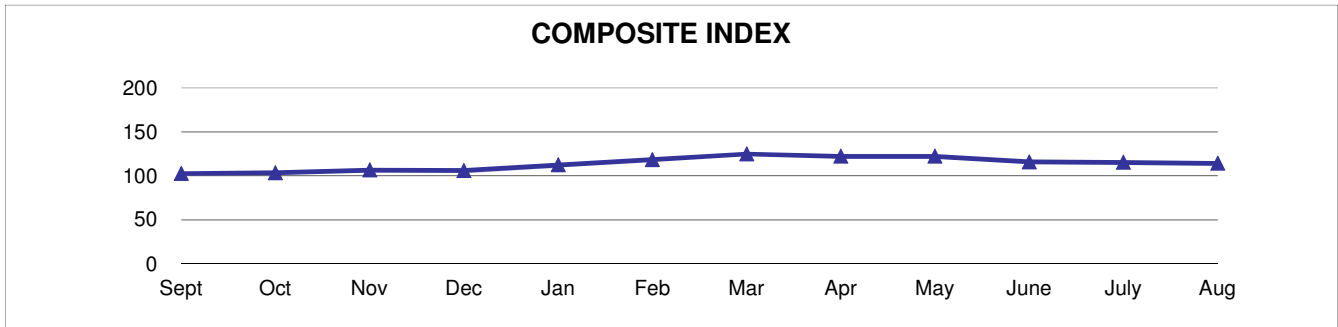
Neil Menezes at 416-644-8349 (Toll-Free: 888-277-2762, Ext. 3989) email: nmenezes@reclaystewardedge.com

Reclay StewardEdge, 26 Wellington Street East, Suite 601, Toronto, Ontario, M5E 1S2

Past editions of *The Price Sheet* are archived on the Reclay StewardEdge website at: <http://reclaystewardedge.com/resources/rse-ontario-price-sheet/>

The Price Sheet

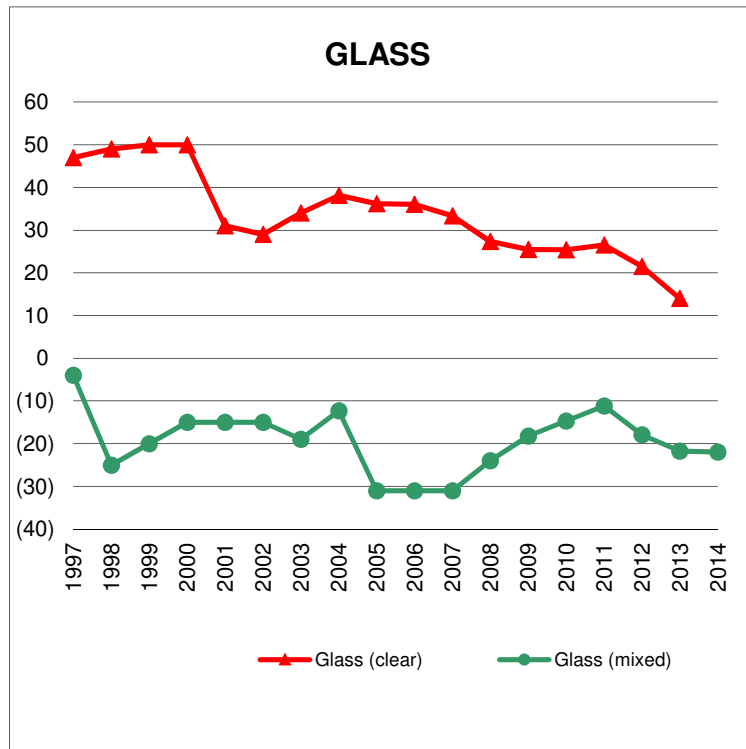
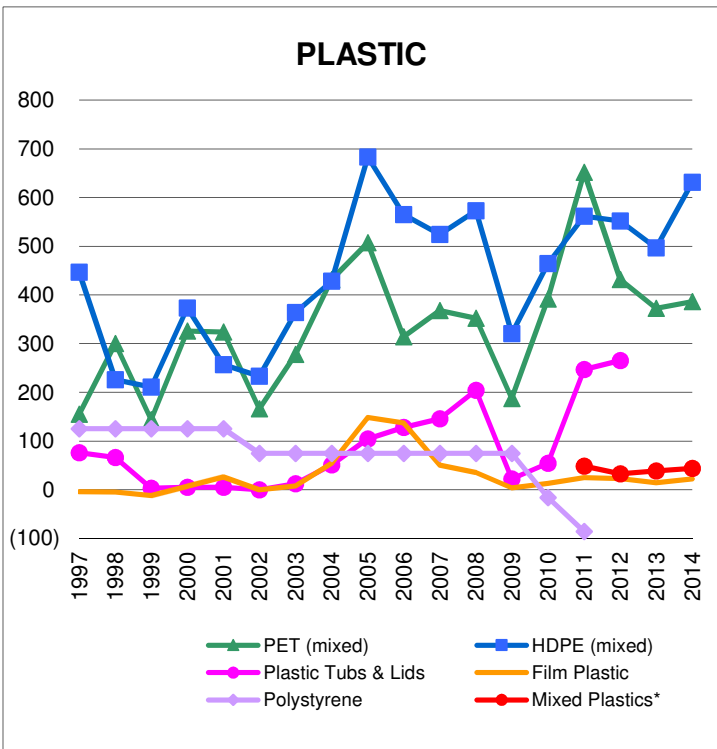
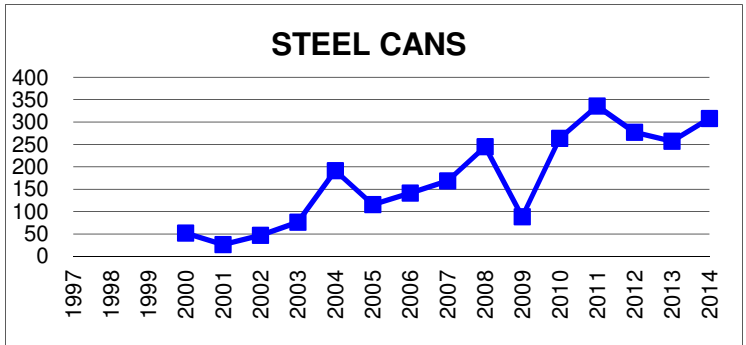
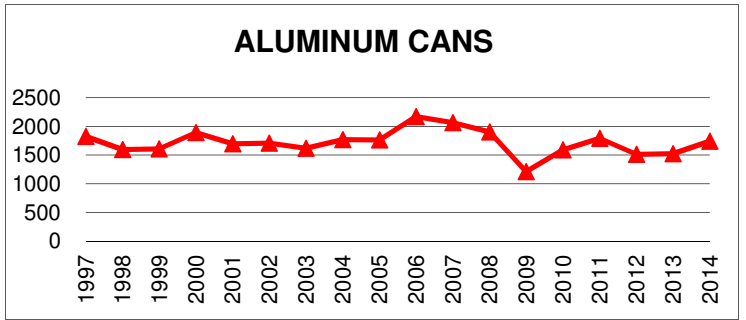
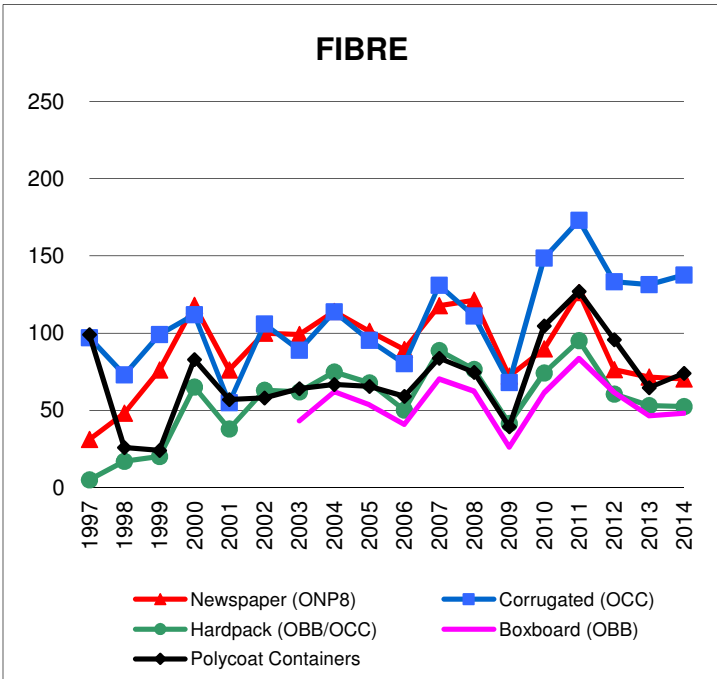
Ontario Monthly Averages from September 2013 to August 2014
(CDN\$/Metric Tonne)



Graphs produced from Monthly Averages Table.

The Price Sheet

Ontario Historical Yearly Averages



Graphs produced from Yearly Averages Table