

The Price Sheet

Ontario Market Price Trends for October 2013

MONTHLY AVERAGES (CDN\$/Metric Tonne)

	May 2012	June 2012	July 2012	Aug 2012	Sept 2012	Oct 2012	Nov 2012	Dec 2012	Jan 2013	Feb 2013	Mar 2013	Apr 2013	May 2013	June 2013	July 2013	Aug 2013	Sept 2013	Oct 2013
Aluminum Cans	1550	1466	1431	1405	1444	1527	1459	1545	1587	1602	1589	1555	1583	1539	1470	1519	1481	1481
Steel Cans	314	248	213	263	258	202	269	262	265	245	270	252	232	230	250	242	242	247
Glass (clear)	29	29	18	17	17	17	14	14	14	14	14	14	n/a	n/a	n/a	n/a	n/a	n/a
Glass (mixed)	(23)	(18)	(19)	(22)	(22)	(22)	(21)	(21)	(21)	(21)	(21)	(21)	(22)	(22)	(22)	(22)	(22)	(22)
PET (mixed)	670	399	274	344	396	323	334	337	351	369	423	426	398	378	366	375	372	340
HDPE (mixed)	680	548	467	538	573	516	437	365	411	532	604	591	476	435	392	391	400	441
Plastic Tubs & Lids	272	n/a	315	332	n/a	n/a	n/a	n/a	n/a	n/a	n/a	n/a	n/a	n/a	n/a	n/a	n/a	n/a
Mixed Plastics*	41	34	28	29	31	28	31	27	32	41	45	39	40	40	40	34	33	40
Film Plastic	32	31	17	11	10	16	13	21	18	26	22	15	15	15	15	10	8	6
Polystyrene	n/a	n/a	n/a	n/a	n/a	n/a	n/a	n/a	n/a	n/a	n/a	n/a	n/a	n/a	n/a	n/a	n/a	n/a
Newspaper (ONP #8)	92	94	80	56	43	53	64	69	73	74	84	85	74	72	71	64	65	67
Corrugated (OCC)	145	148	142	124	102	99	112	117	118	117	130	130	124	126	129	135	140	141
Hardpack (OBB/OCC)	67	65	60	59	39	43	53	55	54	54	61	60	54	54	55	46	53	51
Boxboard (OBB)	71	72	68	60	51	38	44	44	47	42	51	54	38	45	47	44	49	49
Polycoat Containers	106	109	108	106	69	65	61	62	60	68	70	65	65	65	65	65	67	67
Composite Index	140	127	111	100	90	90	101	104	106	108	120	119	108	105	104	101	102	103

YEARLY AVERAGES (CDN\$/Metric Tonne)

	1996	1997	1998	1999	2000	2001	2002	2003	2004	2005	2006	2007	2008	2009	2010	2011	2012	2013
Aluminum Cans	2045	1827	1595	1608	1893	1700	1709	1619	1772	1763	2169	2065	1904	1215	1591	1790	1516	1541
Steel Cans					52	26	47	76	191	116	141	168	245	89	263	335	277	247
Glass (clear)	47	47	49	50	50	31	29	34	38	36	36	33	27	26	25	27	21	14
Glass (mixed)	0	(4)	(25)	(20)	(15)	(15)	(15)	(19)	(12)	(31)	(31)	(31)	(24)	(18)	(15)	(11)	(18)	(22)
PET (mixed)	650	155	300	144	326	324	166	278	432	507	314	368	352	187	391	652	431	380
HDPE (mixed)	356	447	226	211	373	257	233	364	428	683	565	524	573	320	464	562	552	467
Plastic Tubs & Lids	100	76	66	3	5	5	0	12	51	104	128	146	204	22	54	247	265	n/a
Mixed Plastics*																48	32	39
Film Plastic	40	(4)	(5)	(12)	7	26	0	8	55	148	137	51	35	3	13	25	23	15
Polystyrene	125	125	125	125	125	125	75	75	75	75	75	75	75	75	(16)	(86)	n/a	n/a
Newspaper (ONP8)	159	31	48	76	118	76	100	99	114	101	89	118	121	72	90	126	76	73
Corrugated (OCC)	214	97	73	99	112	55	106	89	114	95	80	131	111	68	149	173	133	129
Hardpack (OBB/OCC)	120	5	17	20	65	38	63	62	75	68	50	89	76	42	74	95	61	54
Boxboard (OBB)								43	62	53	41	70	62	26	61	84	62	47
Polycoat Containers	198	99	26	24	83	57	58	64	67	66	59	84	75	39	105	127	96	66
Composite Index					134	95	113	114	131	124	111	145	150	80	124	169	118	108

* The composition for mixed plastics varies from each municipality based on the range of materials accepted and the specifications from their end markets.

Notes:

- Prices are for baled post-consumer residential materials, except glass, which is loose.
- Prices are FOB the municipality except for glass and polystyrene which are delivered. NOTE: As of May 2012, prices for glass are FOB the municipality.
- Prices are compiled from a range of municipal programs across Ontario combined with information from industry representatives. Prices may not be the same as actual prices being paid in any given program.
- The Composite Index is calculated using the overall composition of residential Blue Box material recovered and marketed in Ontario as reported from the approved 2011 WDO Datacall with some additional allocations to material categories. Mixed glass includes coloured glass. ONP8 includes a quantity of lower grade papers sold at lower prices. Composition figures are updated annually. Details available upon request.
- Materials with a listed price of "na" indicate either an insufficient number of municipalities reported a price in the given month (<4) or variation in the reported price which is not considered representative of Ontario

For more information please contact:

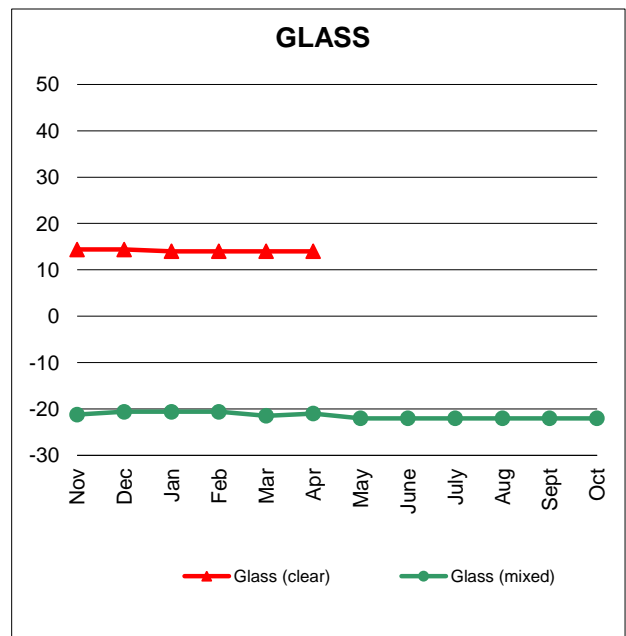
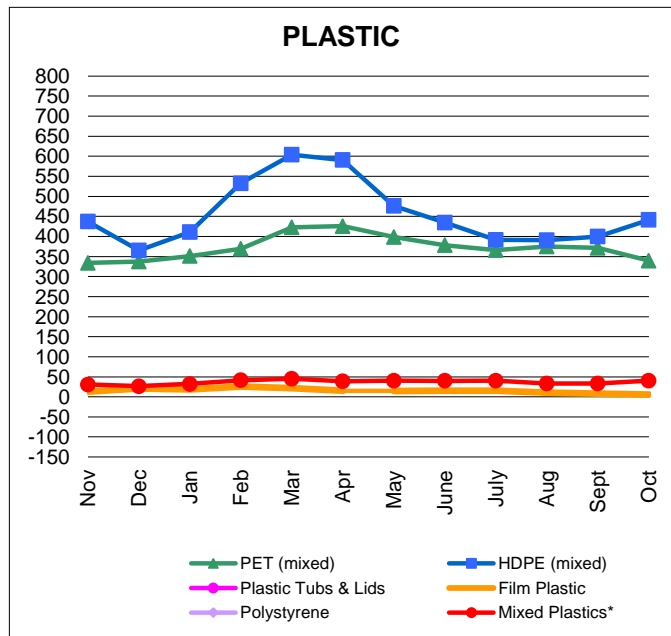
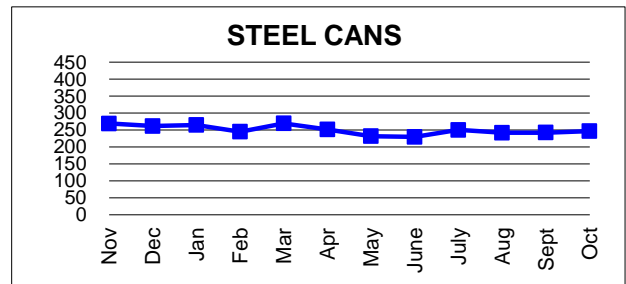
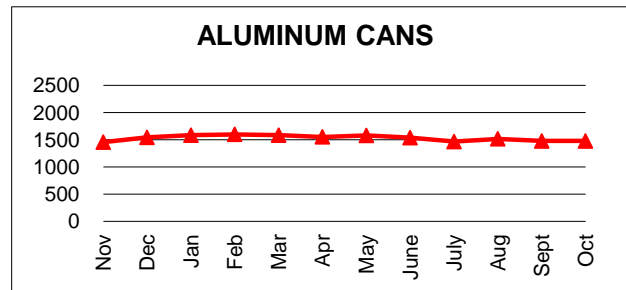
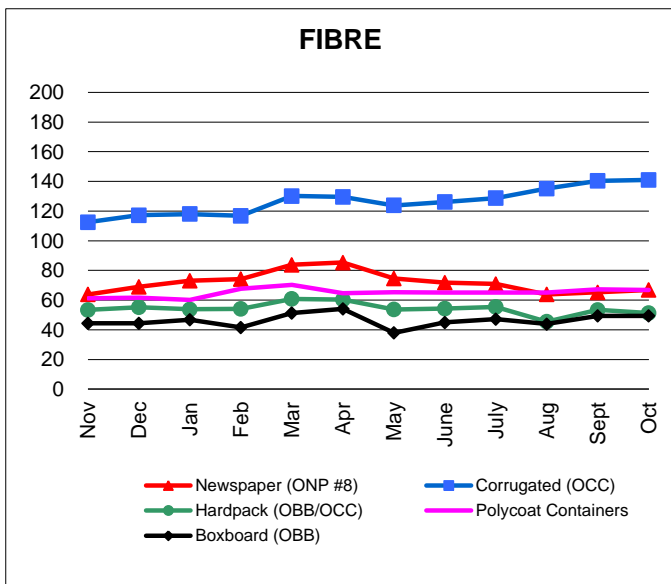
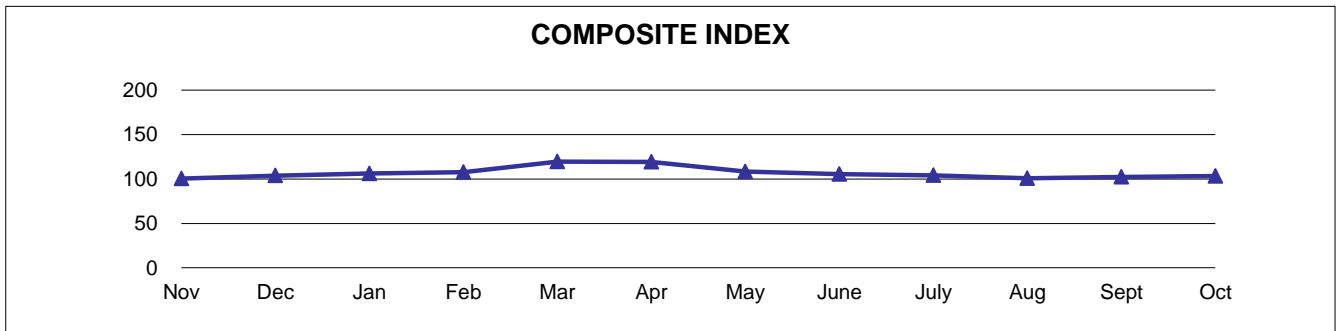
Neil Menezes at 416-644-8349 (Toll-Free: 888-277-2762, Ext. 3989) email: nmenezes@reclaystewardedge.com

Reclay StewardEdge, 26 Wellington Street East, Suite 601, Toronto, Ontario, M5E 1S2

Past editions of *The Price Sheet* are archived on the Reclay StewardEdge website at: <http://reclaystewardedge.com/resources/rse-ontario-price-sheet/>

The Price Sheet

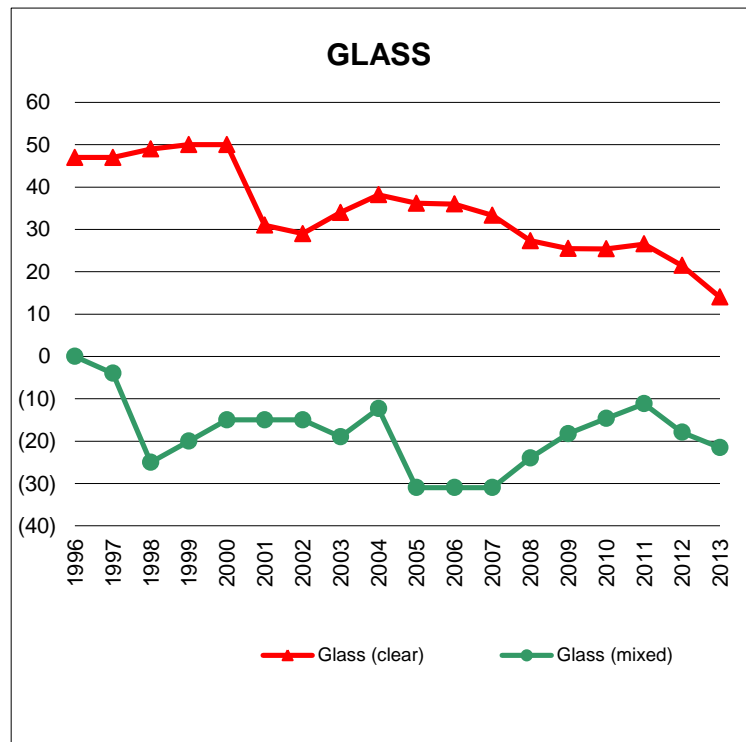
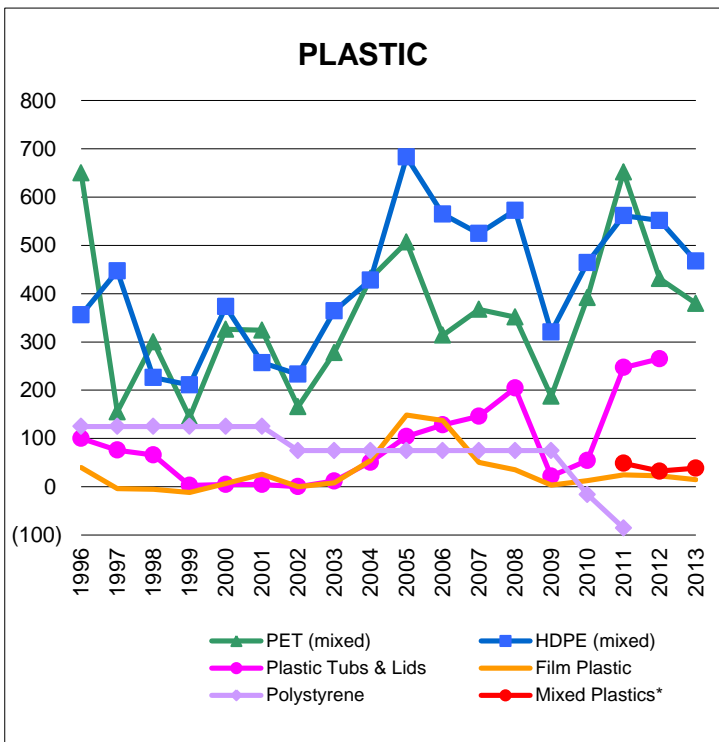
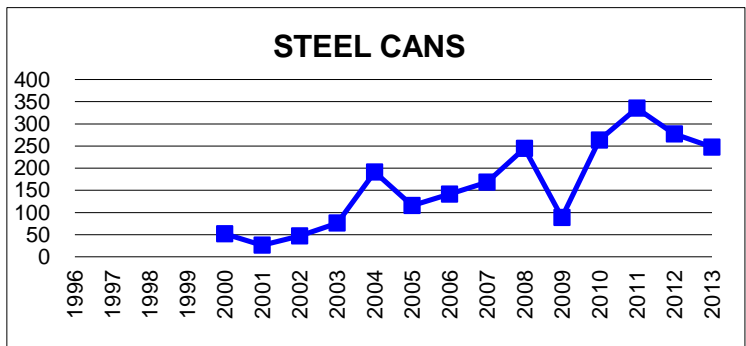
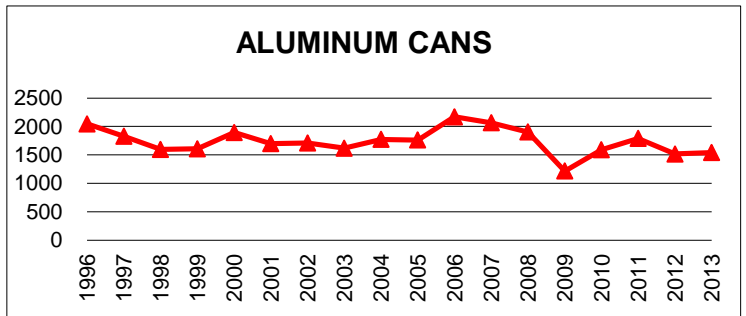
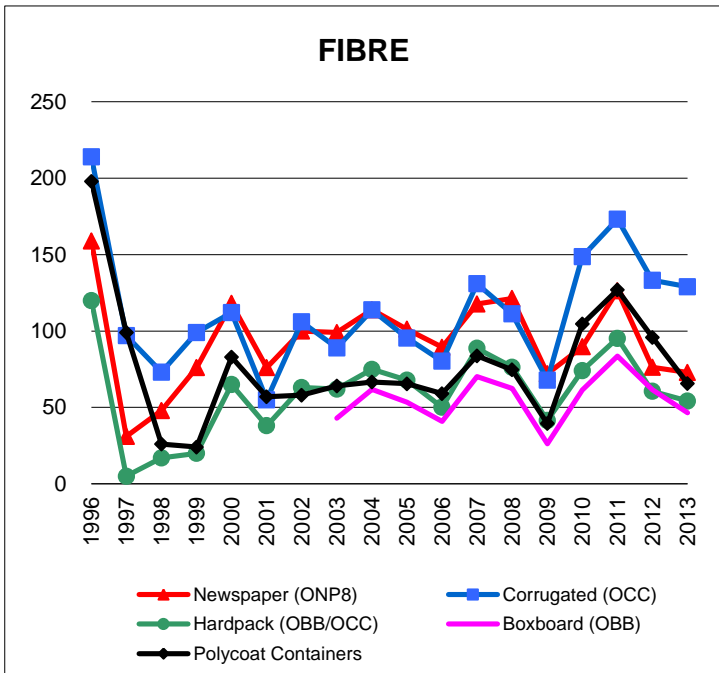
Ontario Monthly Averages from November 2012 to October 2013
(CDN\$/Metric Tonne)



Graphs produced from Monthly Averages Table.

The Price Sheet

Ontario Historical Yearly Averages



Graphs produced from Yearly Averages Table