

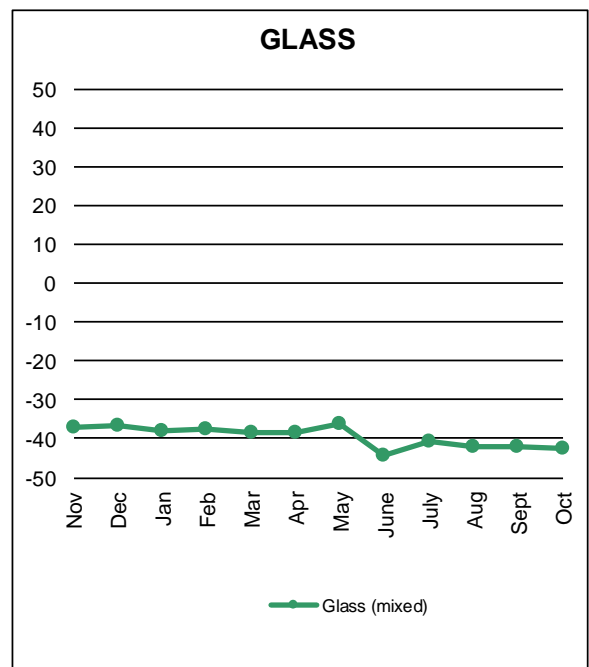
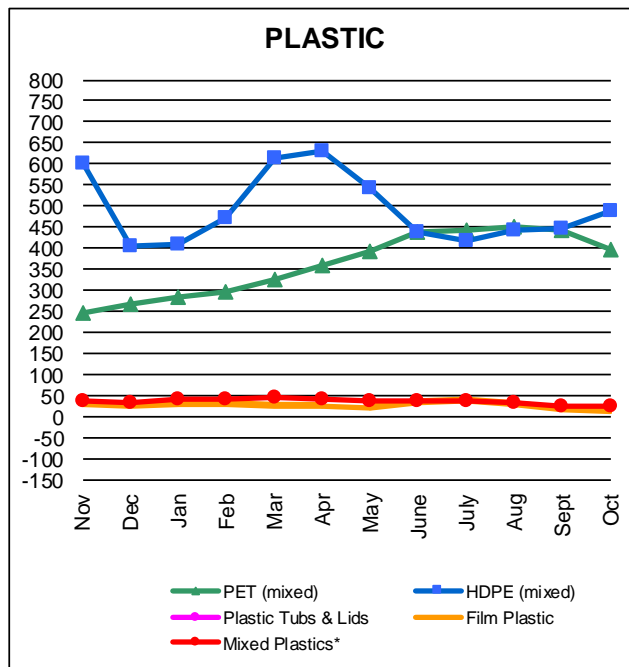
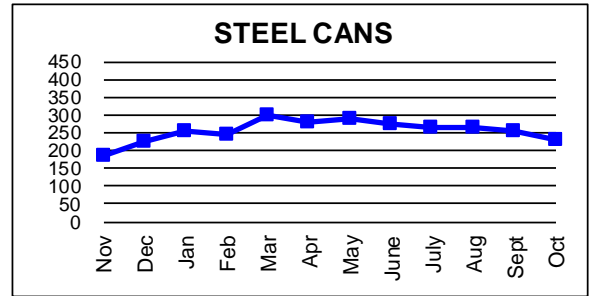
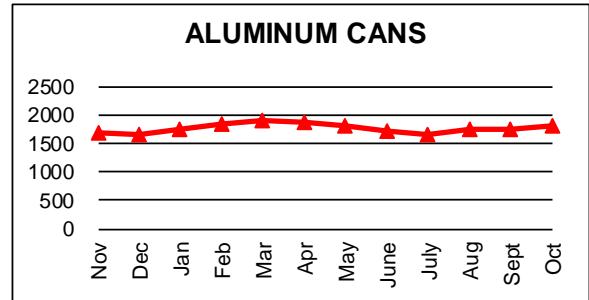
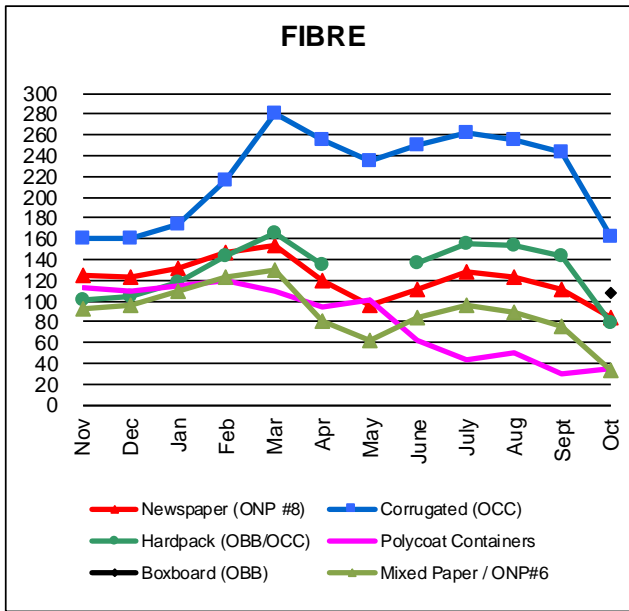
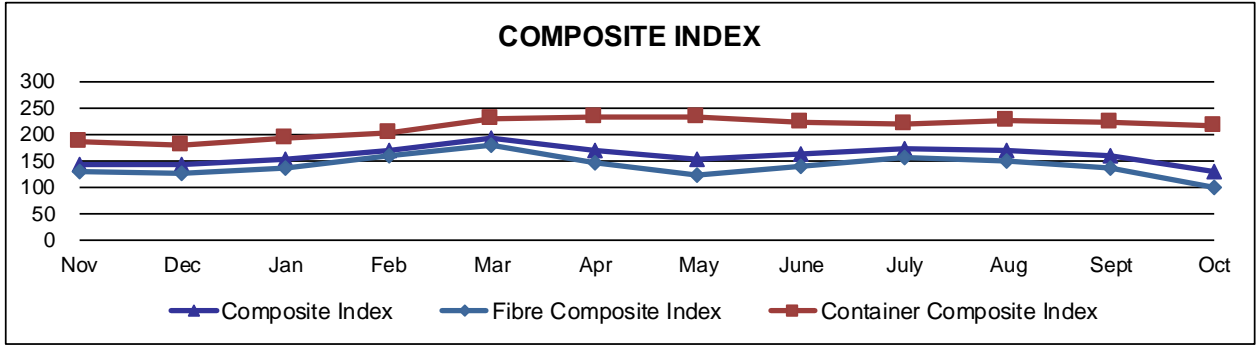
MONTHLY AVERAGES (CDN\$/Metric Tonne)																		
	May 2016	June 2016	July 2016	Aug 2016	Sept 2016	Oct 2016	Nov 2016	Dec 2016	Jan 2017	Feb 2017	Mar 2017	Apr 2017	May 2017	June 2017	July 2017	Aug 2017	Sept 2017	Oct 2017
Newspaper (ONP #8)	83	95	108	122	122	118	125	123	131	146	154	119	96	112	129	122	111	84
Mixed Paper / ONP#6	na	70	73	88	89	84	92	96	110	123	130	80	62	83	96	89	75	33
Corrugated (OCC)	136	149	154	169	163	158	160	160	174	216	281	255	235	249	262	255	243	161
Hardpack (OBB/OCC)	79	85	98	109	102	97	101	104	117	143	166	135	na	136	155	153	143	78
Boxboard (OBB)	53	na	na	na	na	na	na	na	na	na	na	na	na	na	na	na	na	107
Polycoat Containers	114	106	115	112	116	119	112	109	115	120	110	94	102	61	43	49	29	35
PET (mixed)	269	278	295	263	270	259	245	266	285	296	324	359	391	439	444	452	440	396
HDPE (mixed)	635	620	470	455	521	626	603	405	410	472	615	631	541	439	419	444	446	489
Plastic Tubs & Lids	na	na	na	na	na	na	na	na	na	na	na	na	na	na	na	na	na	na
Mixed Plastics*	95	87	62	35	37	45	37	32	38	39	44	39	38	34	35	32	24	24
Film Plastic	47	52	47	42	38	32	32	27	30	28	26	24	21	33	37	32	18	13
Aluminum Cans	1499	1524	1578	1576	1555	1610	1676	1666	1731	1829	1909	1877	1819	1721	1666	1729	1751	1809
Steel Cans	238	228	212	214	187	166	185	227	252	245	297	279	288	275	263	262	254	228
Glass (mixed)	(39)	(39)	(38)	(43)	(38)	(27)	(37)	(37)	(38)	(38)	(38)	(38)	(36)	(44)	(41)	(42)	(42)	(43)
<b>Composite Index</b>	<b>118</b>	<b>127</b>	<b>132</b>	<b>140</b>	<b>140</b>	<b>139</b>	<b>143</b>	<b>141</b>	<b>151</b>	<b>170</b>	<b>192</b>	<b>169</b>	<b>152</b>	<b>161</b>	<b>172</b>	<b>168</b>	<b>159</b>	<b>128</b>
<b>Fibre Composite Index<sup>6</sup></b>	<b>91</b>	<b>103</b>	<b>113</b>	<b>128</b>	<b>126</b>	<b>122</b>	<b>129</b>	<b>127</b>	<b>137</b>	<b>159</b>	<b>179</b>	<b>146</b>	<b>124</b>	<b>139</b>	<b>155</b>	<b>148</b>	<b>137</b>	<b>98</b>
<b>Container Composite Index<sup>7</sup></b>	<b>196</b>	<b>196</b>	<b>187</b>	<b>175</b>	<b>179</b>	<b>189</b>	<b>185</b>	<b>180</b>	<b>192</b>	<b>203</b>	<b>229</b>	<b>232</b>	<b>231</b>	<b>223</b>	<b>220</b>	<b>225</b>	<b>221</b>	<b>214</b>

YEARLY AVERAGES (CDN\$/Metric Tonne)																		
	2000	2001	2002	2003	2004	2005	2006	2007	2008	2009	2010	2011	2012	2013	2014	2015	2016	2017
Newspaper (ONP8)	118	76	100	99	114	101	89	118	121	72	90	126	76	71	69	72	103	120
Mixed Paper / ONP#6																43	73	88
Corrugated (OCC)	112	55	106	89	114	95	80	131	111	68	149	173	133	131	131	127	152	233
Hardpack (OBB/OCC)	65	38	63	62	75	68	50	89	76	42	74	95	61	53	51	66	91	136
Boxboard (OBB)				43	62	53	41	70	62	26	61	84	62	46	48	50	50	107
Polycoat Containers	83	57	58	64	67	66	59	84	75	39	105	127	96	65	79	114	114	76
PET (mixed)	326	324	166	278	432	507	314	368	352	187	391	652	431	372	377	295	265	383
HDPE (mixed)	373	257	233	364	428	683	565	524	573	320	464	562	552	497	659	617	533	490
Plastic Tubs & Lids	5	5	0	12	51	104	128	146	204	22	54	247	265	na	na	na	na	na
Mixed Plastics*												48	32	38	46	58	61	35
Film Plastic	7	26	0	8	55	148	137	51	35	3	13	25	23	14	29	47	40	26
Aluminum Cans	1893	1700	1709	1619	1772	1763	2169	2065	1904	1215	1591	1790	1516	1523	1783	1548	1576	1784
Steel Cans	52	26	47	76	191	116	141	168	245	89	263	335	277	257	299	179	200	264
Glass (mixed)	(15)	(15)	(15)	(19)	(12)	(31)	(31)	(31)	(24)	(18)	(15)	(11)	(18)	(22)	(22)	(30)	(37)	(40)
<b>Composite Index</b>	<b>134</b>	<b>95</b>	<b>113</b>	<b>114</b>	<b>131</b>	<b>124</b>	<b>111</b>	<b>145</b>	<b>150</b>	<b>80</b>	<b>124</b>	<b>169</b>	<b>118</b>	<b>107</b>	<b>117</b>	<b>105</b>	<b>129</b>	<b>162</b>
<b>Fibre Composite Index<sup>6</sup></b>																<b>77</b>	<b>109</b>	<b>142</b>
<b>Container Composite Index<sup>7</sup></b>																<b>188</b>	<b>184</b>	<b>219</b>

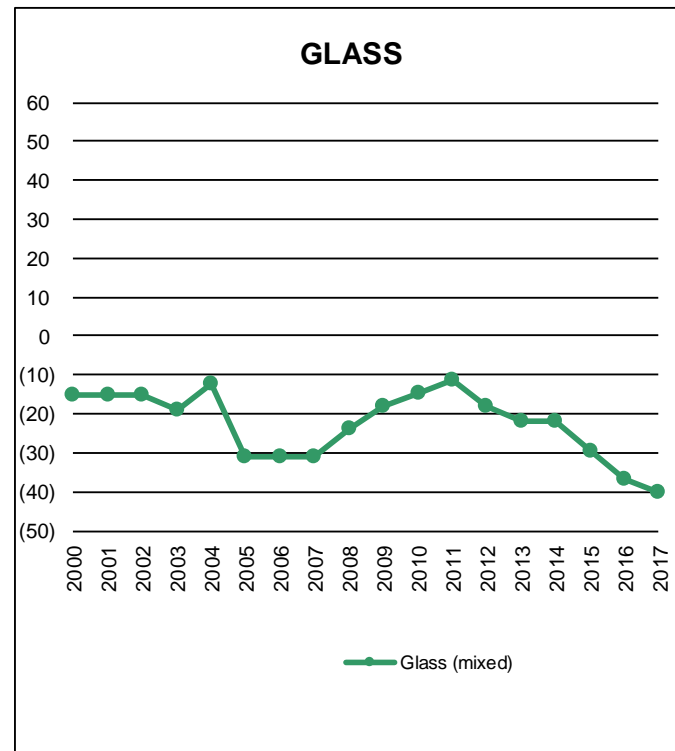
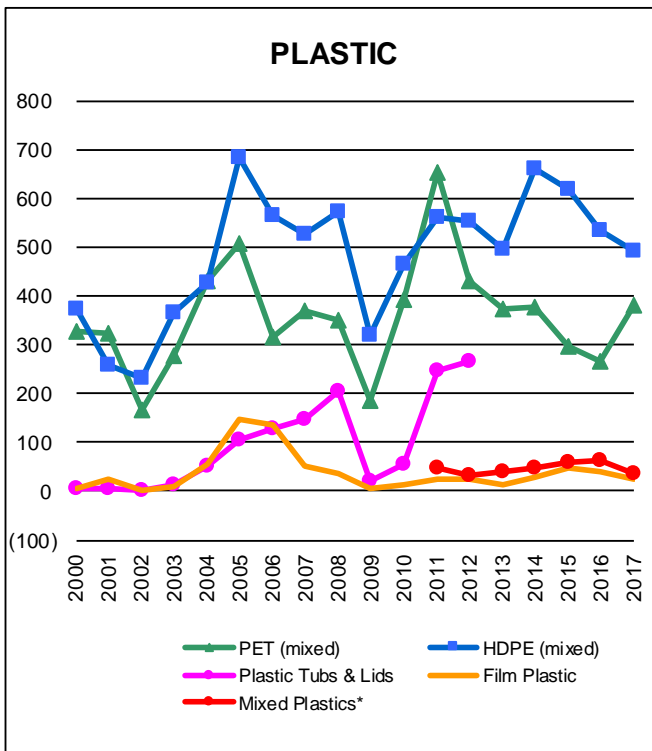
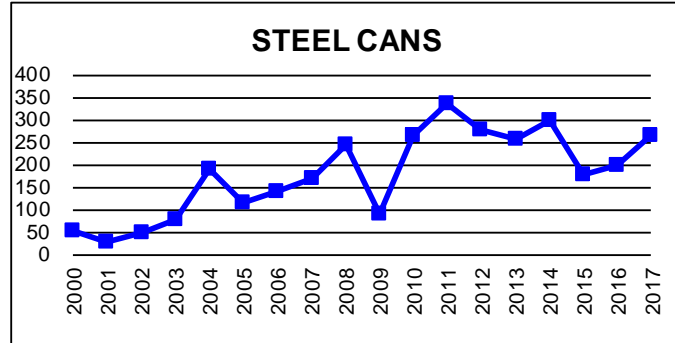
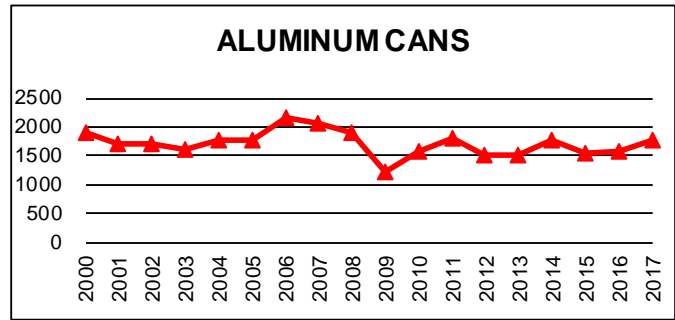
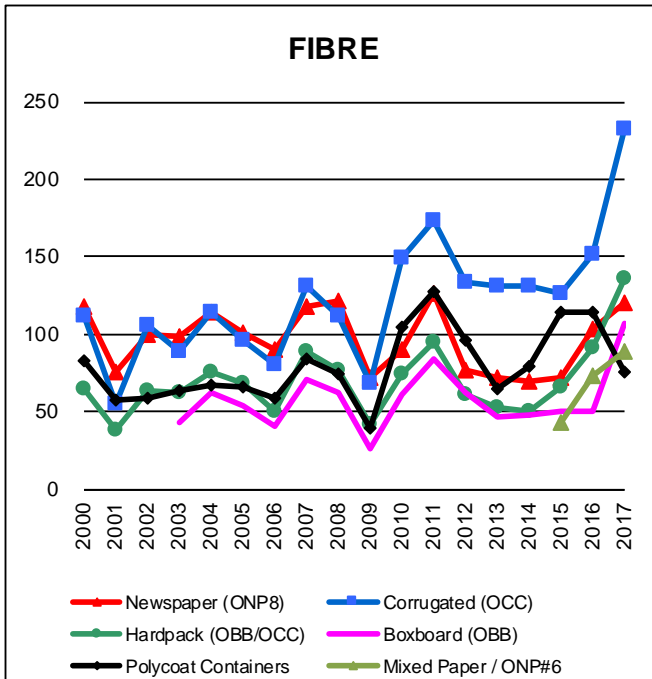
\*The composition for mixed plastics varies from each municipality based on the range of materials accepted and the specifications from their end markets.

**Notes:**

- Prices are for baled post-consumer residential materials except glass, which is loose.
- As of May 2012, prices for all materials are FOB the municipality including glass. Prior to May 2012, prices for glass were delivered prices.
- Prices are compiled from a range of municipal programs across Ontario combined with information from industry representatives. Prices may not be the same as actual prices being paid in any given program.
- The Composite Index is calculated using the overall composition of residential Blue Box material recovered and marketed in Ontario as reported from the approved 2015 RPPA (formerly WDO) Datacall with some additional allocations to material categories. Mixed glass includes coloured glass. Composition figures are updated annually. Details available upon request.
- Materials with a listed price of "NA" indicate either an insufficient number of municipalities reported a price in the given month (<4) or variation in the reported price which is not considered representative of Ontario.
- The Fibre Composite Index is calculated using ONP#8, Mixed Paper (ONP#6), Corrugated (OCC), Hardpack (OBB/OCC), and Boxboard (OBB).
- Polycoat containers are included in the container composite index and NOT the fibre composite index.



Graphs produced from Monthly Averages Table.



Graphs produced from Yearly Averages Table