

| MONTHLY AVERAGES (CDN\$/Metric Tonne) | | | | | | | | | | | | | | | | | | |
|--|------------|------------|------------|------------|------------|------------|------------|------------|------------|------------|------------|------------|------------|------------|------------|------------|------------|------------|
| | July 2015 | Aug 2015 | Sept 2015 | Oct 2015 | Nov 2015 | Dec 2015 | Jan 2016 | Feb 2016 | Mar 2016 | Apr 2016 | May 2016 | June 2016 | July 2016 | Aug 2016 | Sept 2016 | Oct 2016 | Nov 2016 | Dec 2016 |
| Newspaper (ONP #8) | 75 | 74 | 77 | 80 | 78 | 68 | 70 | 72 | 71 | 72 | 83 | 95 | 108 | 122 | 122 | 118 | 125 | 123 |
| Mixed Paper / ONP#6 | 50 | 52 | 52 | 53 | na | 43 | 41 | 43 | 43 | 32 | na | 70 | 73 | 88 | 89 | 84 | 92 | 96 |
| Corrugated (OCC) | 133 | 137 | 139 | 141 | 138 | 134 | 140 | 141 | 135 | 133 | 136 | 149 | 154 | 169 | 163 | 158 | 160 | 160 |
| Hardpack (OBB/OCC) | 74 | 77 | 78 | 79 | 75 | 70 | 71 | 72 | 70 | 70 | 79 | 85 | 98 | 109 | 102 | 97 | 101 | 104 |
| Boxboard (OBB) | 63 | 53 | 53 | 53 | 64 | 50 | 50 | 50 | 49 | 48 | 53 | na | na | na | na | na | na | na |
| Polycoat Containers | 121 | 117 | 116 | 134 | 120 | 138 | 133 | 125 | 125 | 112 | 114 | 106 | 115 | 112 | 116 | 119 | 112 | 109 |
| PET (mixed) | 356 | 382 | 322 | 174 | 154 | 176 | 206 | 239 | 265 | 269 | 269 | 278 | 295 | 263 | 270 | 259 | 245 | 266 |
| HDPE (mixed) | 560 | 513 | 496 | 593 | 704 | 702 | 676 | 550 | 516 | 594 | 635 | 620 | 470 | 455 | 521 | 626 | 603 | 405 |
| Plastic Tubs & Lids | na | na | na | na | na | na | na | na | na | na | na | na | na | na | na | na | na | na |
| Mixed Plastics* | 59 | 59 | 59 | 62 | 64 | 70 | 78 | 91 | 91 | 95 | 95 | 87 | 62 | 35 | 37 | 45 | 37 | 32 |
| Film Plastic | 58 | 56 | 49 | 37 | 37 | 43 | 44 | 48 | 43 | 49 | 47 | 52 | 47 | 42 | 38 | 32 | 32 | 27 |
| Aluminum Cans | 1394 | 1377 | 1460 | 1479 | 1432 | 1440 | 1540 | 1584 | 1522 | 1450 | 1499 | 1524 | 1578 | 1576 | 1555 | 1610 | 1676 | 1666 |
| Steel Cans | 211 | 189 | 190 | 140 | 108 | 108 | 143 | 146 | 158 | 210 | 238 | 228 | 212 | 214 | 187 | 166 | 185 | 227 |
| Glass (mixed) | (37) | (35) | (33) | (34) | (35) | (35) | (35) | (34) | (35) | (35) | (39) | (39) | (38) | (43) | (38) | (27) | (37) | (37) |
| Composite Index | 108 | 108 | 108 | 104 | 103 | 96 | 106 | 107 | 106 | 109 | 118 | 127 | 132 | 140 | 140 | 139 | 143 | 141 |
| Fibre Composite Index⁶ | 81 | 81 | 84 | 86 | 86 | 76 | 81 | 83 | 81 | 81 | 91 | 103 | 113 | 128 | 126 | 122 | 129 | 127 |
| Container Composite Index⁷ | 189 | 187 | 180 | 156 | 154 | 159 | 177 | 178 | 179 | 189 | 196 | 196 | 187 | 175 | 179 | 189 | 185 | 180 |

| YEARLY AVERAGES (CDN\$/Metric Tonne) | | | | | | | | | | | | | | | | | | |
|--|------|------------|-----------|------------|------------|------------|------------|------------|------------|------------|-----------|------------|------------|------------|------------|------------|------------|------------|
| | 1999 | 2000 | 2001 | 2002 | 2003 | 2004 | 2005 | 2006 | 2007 | 2008 | 2009 | 2010 | 2011 | 2012 | 2013 | 2014 | 2015 | 2016 |
| Newspaper (ONP8) | 76 | 118 | 76 | 100 | 99 | 114 | 101 | 89 | 118 | 121 | 72 | 90 | 126 | 76 | 71 | 69 | 72 | 98 |
| Mixed Paper / ONP#6 | na | na | na | na | na | na | na | na | na | na | na | na | na | na | na | na | 43 | 68 |
| Corrugated (OCC) | 99 | 112 | 55 | 106 | 89 | 114 | 95 | 80 | 131 | 111 | 68 | 149 | 173 | 133 | 131 | 131 | 127 | 150 |
| Hardpack (OBB/OCC) | 20 | 65 | 38 | 63 | 62 | 75 | 68 | 50 | 89 | 76 | 42 | 74 | 95 | 61 | 53 | 51 | 66 | 88 |
| Boxboard (OBB) | na | na | na | na | 43 | 62 | 53 | 41 | 70 | 62 | 26 | 61 | 84 | 62 | 46 | 48 | 50 | 50 |
| Polycoat Containers | 24 | 83 | 57 | 58 | 64 | 67 | 66 | 59 | 84 | 75 | 39 | 105 | 127 | 96 | 65 | 79 | 114 | 116 |
| PET (mixed) | 144 | 326 | 324 | 166 | 278 | 432 | 507 | 314 | 368 | 352 | 187 | 391 | 652 | 431 | 372 | 377 | 295 | 260 |
| HDPE (mixed) | 211 | 373 | 257 | 233 | 364 | 428 | 683 | 565 | 524 | 573 | 320 | 464 | 562 | 552 | 497 | 659 | 617 | 556 |
| Plastic Tubs & Lids | 3 | 5 | 5 | 0 | 12 | 51 | 104 | 128 | 146 | 204 | 22 | 54 | 247 | 265 | na | na | na | na |
| Mixed Plastics* | na | na | na | na | na | na | na | na | na | na | na | na | 48 | 32 | 38 | 46 | 58 | 65 |
| Film Plastic | (12) | 7 | 26 | 0 | 8 | 55 | 148 | 137 | 51 | 35 | 3 | 13 | 25 | 23 | 14 | 29 | 47 | 42 |
| Aluminum Cans | 1608 | 1893 | 1700 | 1709 | 1619 | 1772 | 1763 | 2169 | 2065 | 1904 | 1215 | 1591 | 1790 | 1516 | 1523 | 1783 | 1548 | 1565 |
| Steel Cans | na | 52 | 26 | 47 | 76 | 191 | 116 | 141 | 168 | 245 | 89 | 263 | 335 | 277 | 257 | 299 | 179 | 193 |
| Glass (mixed) | (20) | (15) | (15) | (15) | (19) | (12) | (31) | (31) | (31) | (24) | (18) | (15) | (11) | (18) | (22) | (22) | (30) | (36) |
| Composite Index | | 134 | 95 | 113 | 114 | 131 | 124 | 111 | 145 | 150 | 80 | 124 | 169 | 118 | 107 | 117 | 105 | 126 |
| Fibre Composite Index⁶ | | | | | | | | | | | | | | | | | 77 | 105 |
| Container Composite Index⁷ | | | | | | | | | | | | | | | | | 188 | 184 |

*The composition for mixed plastics varies from each municipality based on the range of materials accepted and the specifications from their end markets.

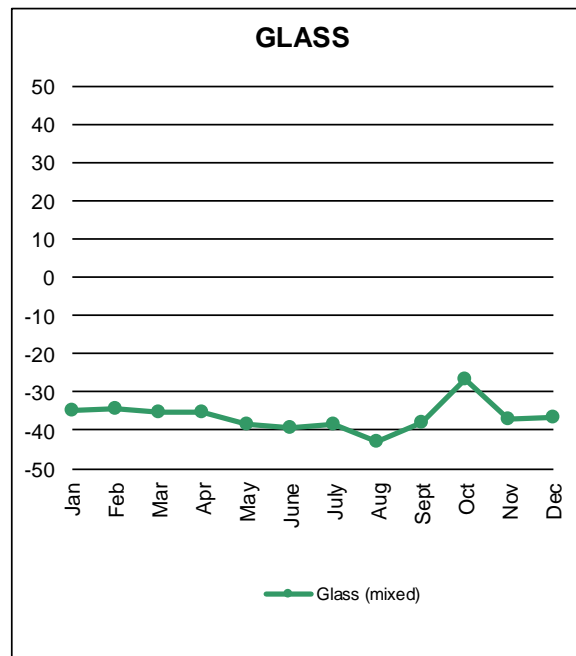
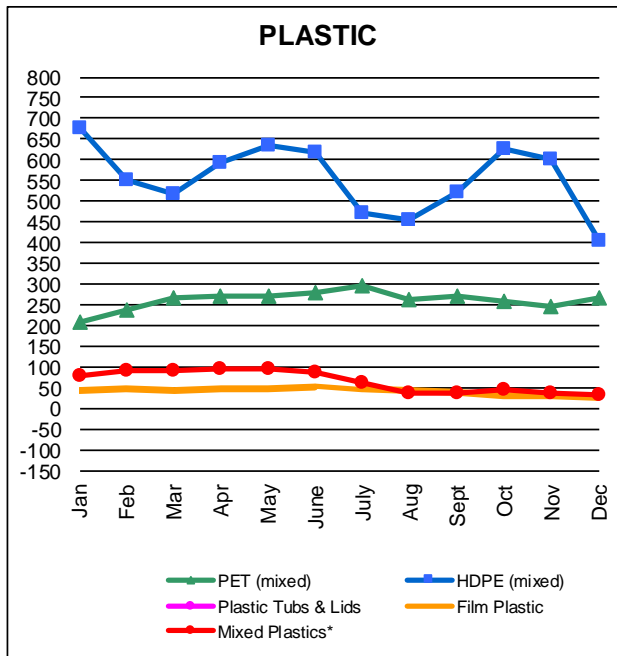
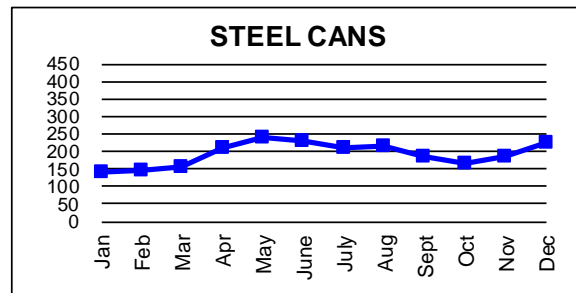
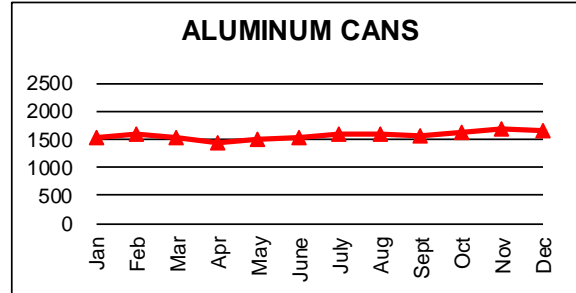
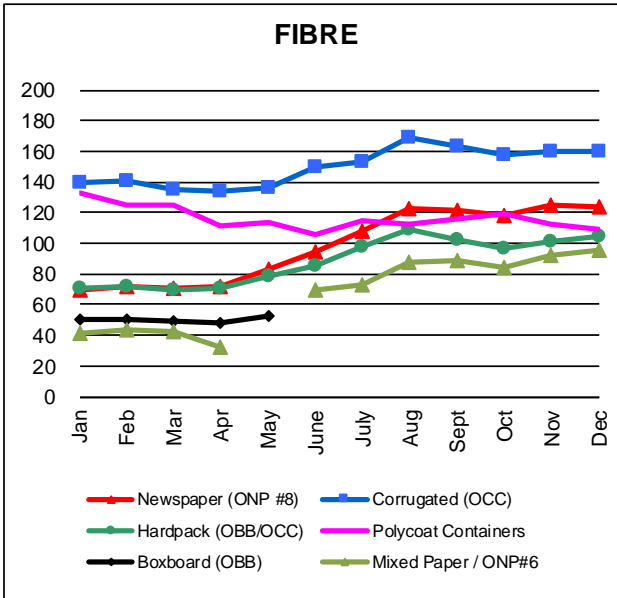
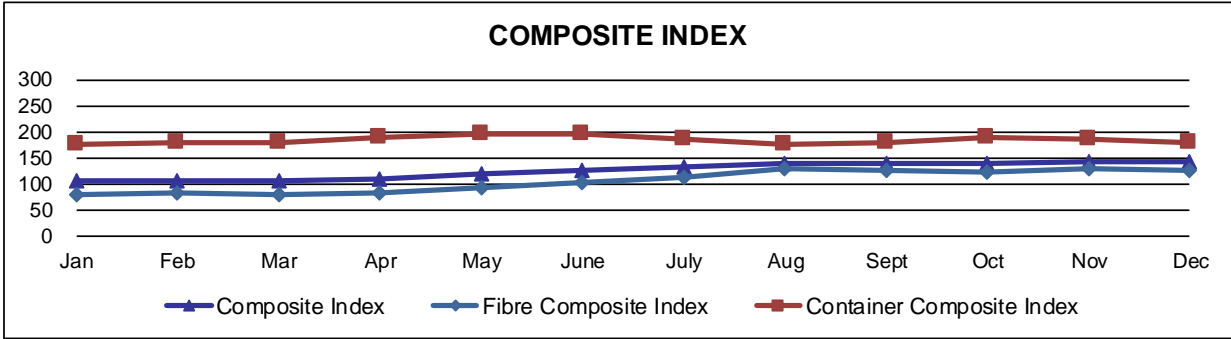
Notes:

1. Prices are for baled post-consumer residential materials except glass, which is loose.
2. As of May 2012, prices for all materials are FOB the municipality including glass. Prior to May 2012, prices for glass were delivered prices.
3. Prices are compiled from a range of municipal programs across Ontario combined with information from industry representatives. Prices may not be the same as actual prices being paid in any given program.
4. The Composite Index is calculated using the overall composition of residential Blue Box material recovered and marketed in Ontario as reported from the approved 2014 WDO Datacall with some additional allocations to material categories. Mixed glass includes coloured glass. Composition figures are updated annually. Details available upon request.
5. Materials with a listed price of "NA" indicate either an insufficient number of municipalities reported a price in the given month (<4) or variation in the reported price which is not considered representative of Ontario.
6. The Fibre Composite Index is calculated using ONP#8, Mixed Paper (ONP#6), Corrugated (OCC), Hardpack (OBB/OCC), and Boxboard (OBB).
7. Polycoat containers are included in the container composite index and NOT the fibre composite index.

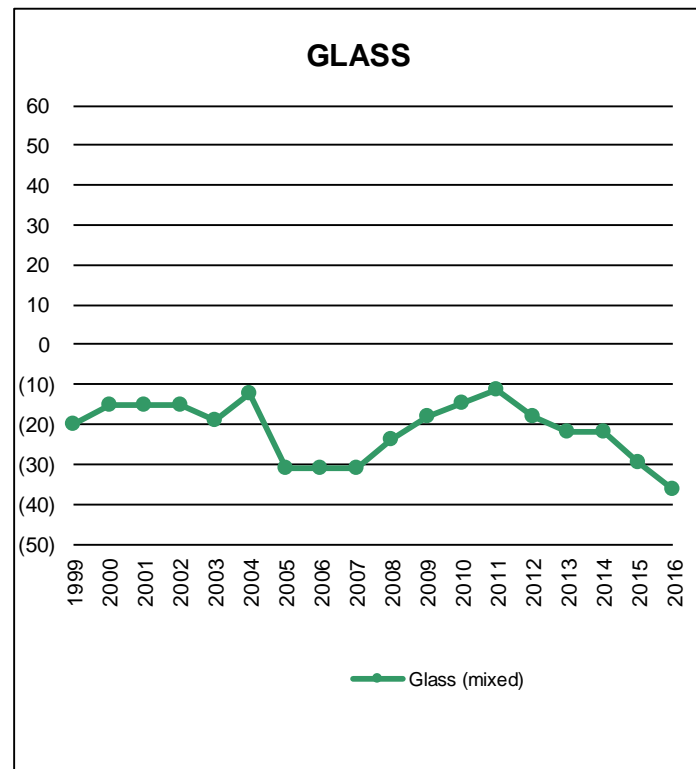
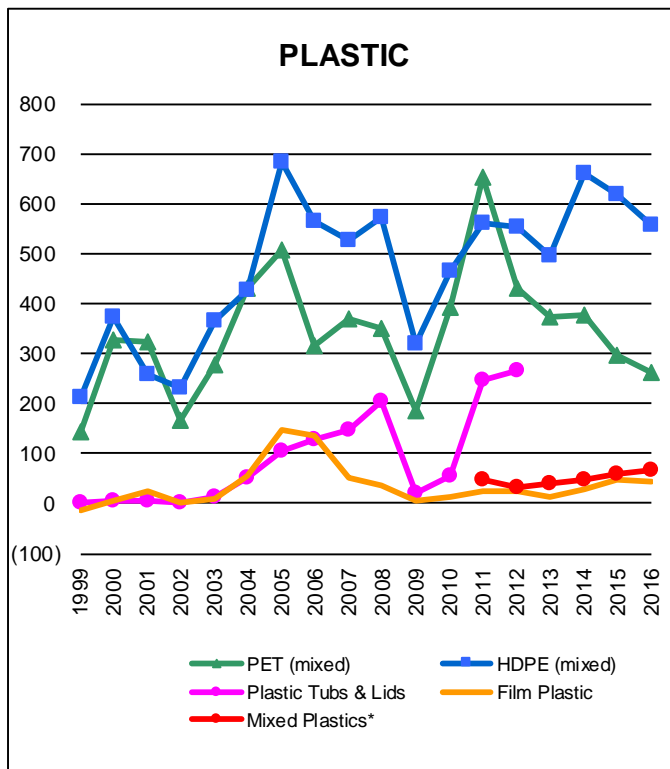
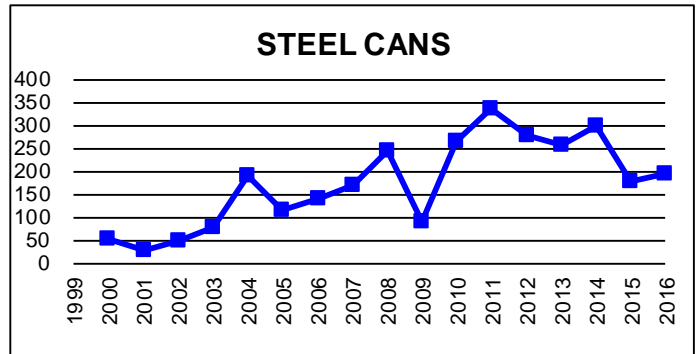
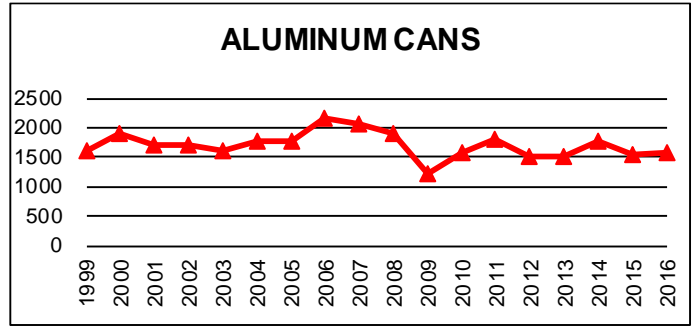
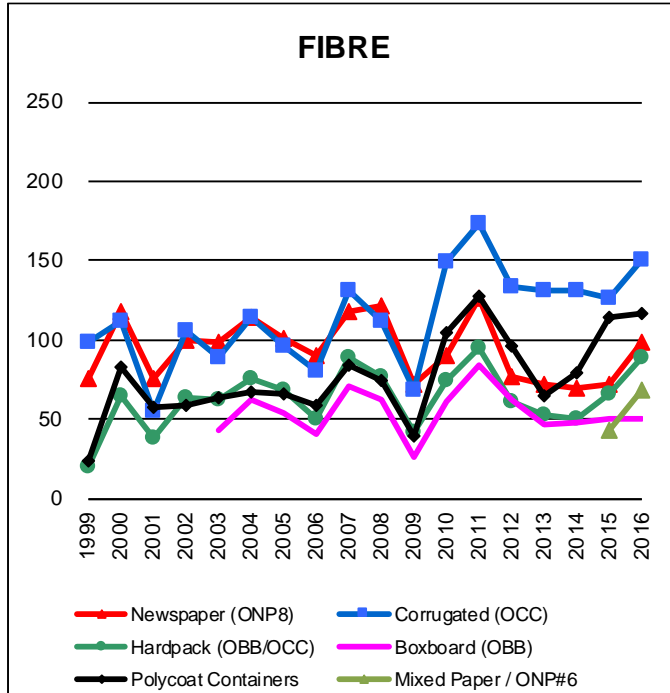
For more information:

Neil Menezes, Reclay StewardEdge
nmenezes@reclaystewardedge.com, 416-644-8349

© CIF 2016



Graphs produced from Monthly Averages Table.



Graphs produced from Yearly Averages Table