

## Price Sheet

### Ontario Market Price Trends for October 2015

| MONTHLY AVERAGES (CDN\$/Metric Tonne)        |             |              |              |             |              |             |             |             |             |             |             |             |             |              |              |             |              |             |
|--|-------------|--------------|--------------|-------------|--------------|-------------|-------------|-------------|-------------|-------------|-------------|-------------|-------------|--------------|--------------|-------------|--------------|-------------|
|  | May<br>2014 | June<br>2014 | July<br>2014 | Aug<br>2014 | Sept<br>2014 | Oct<br>2014 | Nov<br>2014 | Dec<br>2014 | Jan<br>2015 | Feb<br>2015 | Mar<br>2015 | Apr<br>2015 | May<br>2015 | June<br>2015 | July<br>2015 | Aug<br>2015 | Sept<br>2015 | Oct<br>2015 |
| Newspaper (ONP #8)                           | 71          | 69           | 69           | 69          | 68           | 70          | 67          | 62          | 64          | 71          | 70          | 71          | 70          | 70           | 75           | 74          | 77           | 80          |
| Mixed Paper / ONP#6                          | na          | na           | na           | na          | na           | na          | na          | na          | 37          | 28          | 38          | 40          | 37          | 40           | 50           | 52          | 52           | 53          |
| Corrugated (OCC)                             | 140         | 134          | 131          | 127         | 119          | 121         | 117         | 117         | 118         | 118         | 117         | 117         | 112         | 114          | 133          | 137         | 139          | 141         |
| Hardpack (OBB/OCC)                           | 53          | 51           | 50           | 51          | 46           | 48          | 47          | 47          | 51          | 60          | 58          | 58          | 58          | 53           | 74           | 77          | 78           | 79          |
| Boxboard (OBB)                               | 49          | 48           | 46           | 46          | 47           | 43          | 48          | 52          | 43          | 41          | 44          | 44          | 43          | 47           | 63           | 53          | 53           | 53          |
| Polycoat Containers                          | 79          | 77           | 76           | 84          | 85           | 88          | 87          | 95          | 93          | 108         | 108         | 103         | 103         | 108          | 121          | 117         | 116          | 134         |
| PET (mixed)                                  | 458         | 361          | 336          | 323         | 342          | 346         | 355         | 393         | 368         | 343         | 337         | 326         | 298         | 301          | 356          | 382         | 322          | 174         |
| HDPE (mixed)                                 | 603         | 610          | 609          | 571         | 673          | 764         | 716         | 698         | 571         | 545         | 623         | 751         | 698         | 648          | 560          | 513         | 496          | 593         |
| Plastic Tubs & Lids                          | na          | na           | na           | na          | na           | na          | na          | na          | na          | na          | na          | na          | na          | na           | na           | na          | na           | na          |
| Mixed Plastics*                              | 49          | 49           | 46           | 47          | 49           | 47          | 53          | 52          | 48          | 49          | 54          | 55          | 60          | 60           | 59           | 59          | 59           | 62          |
| Film Plastic                                 | 28          | 32           | 30           | 30          | 30           | 50          | 38          | 53          | 38          | 33          | 43          | 47          | 63          | 55           | 58           | 56          | 49           | 37          |
| Aluminum Cans                                | 1794        | 1758         | 1813         | 1831        | 1840         | 1852        | 1840        | 1924        | 1877        | 1931        | 1787        | 1653        | 1457        | 1284         | 1394         | 1377        | 1460         | 1479        |
| Steel Cans                                   | 313         | 305          | 310          | 310         | 311          | 296         | 264         | 251         | 265         | 181         | 186         | 184         | 185         | 199          | 211          | 189         | 190          | 140         |
| Glass (mixed)                                | (22)        | (22)         | (22)         | (22)        | (22)         | (22)        | (22)        | (22)        | (22)        | (25)        | (25)        | (25)        | (25)        | (27)         | (37)         | (35)        | (33)         | (34)        |
| <b>Composite Index</b>                       | <b>122</b>  | <b>116</b>   | <b>115</b>   | <b>114</b>  | <b>115</b>   | <b>118</b>  | <b>114</b>  | <b>113</b>  | <b>108</b>  | <b>107</b>  | <b>107</b>  | <b>108</b>  | <b>102</b>  | <b>100</b>   | <b>108</b>   | <b>108</b>  | <b>108</b>   | <b>104</b>  |
| <b>Fibre Composite Index<sup>6</sup></b>     |             |              |              |             |              |             |             |             | <b>69</b>   | <b>72</b>   | <b>73</b>   | <b>74</b>   | <b>72</b>   | <b>72</b>    | <b>81</b>    | <b>81</b>   | <b>84</b>    | <b>86</b>   |
| <b>Container Composite Index<sup>7</sup></b> |             |              |              |             |              |             |             |             | <b>226</b>  | <b>210</b>  | <b>209</b>  | <b>210</b>  | <b>193</b>  | <b>183</b>   | <b>189</b>   | <b>187</b>  | <b>180</b>   | <b>156</b>  |

| YEARLY AVERAGES (CDN\$/Metric Tonne)         |      |      |            |           |            |            |            |            |            |            |            |           |            |            |            |            |            |            |
|--|------|------|------------|-----------|------------|------------|------------|------------|------------|------------|------------|-----------|------------|------------|------------|------------|------------|------------|
|  | 1998 | 1999 | 2000       | 2001      | 2002       | 2003       | 2004       | 2005       | 2006       | 2007       | 2008       | 2009      | 2010       | 2011       | 2012       | 2013       | 2014       | 2015       |
| Newspaper (ONP#8)                            | 48   | 76   | 118        | 76        | 100        | 99         | 114        | 101        | 89         | 118        | 121        | 72        | 90         | 126        | 76         | 71         | 69         | 72         |
| Mixed Paper / ONP#6                          |      |      |            |           |            |            |            |            |            |            |            |           |            |            |            |            |            | 43         |
| Corrugated (OCC)                             | 73   | 99   | 112        | 55        | 106        | 89         | 114        | 95         | 80         | 131        | 111        | 68        | 149        | 173        | 133        | 131        | 131        | 125        |
| Hardpack (OBB/OCC)                           | 17   | 20   | 65         | 38        | 63         | 62         | 75         | 68         | 50         | 89         | 76         | 42        | 74         | 95         | 61         | 53         | 51         | 65         |
| Boxboard (OBB)                               |      |      |            |           |            | 43         | 62         | 53         | 41         | 70         | 62         | 26        | 61         | 84         | 62         | 46         | 48         | 48         |
| Polycoat Containers                          | 26   | 24   | 83         | 57        | 58         | 64         | 67         | 66         | 59         | 84         | 75         | 39        | 105        | 127        | 96         | 65         | 79         | 111        |
| PET (mixed)                                  | 300  | 144  | 326        | 324       | 166        | 278        | 432        | 507        | 314        | 368        | 352        | 187       | 391        | 652        | 431        | 372        | 377        | 321        |
| HDPE (mixed)                                 | 226  | 211  | 373        | 257       | 233        | 364        | 428        | 683        | 565        | 524        | 573        | 320       | 464        | 562        | 552        | 497        | 659        | 600        |
| Plastic Tubs & Lids                          | 66   | 3    | 5          | 5         | 0          | 12         | 51         | 104        | 128        | 146        | 204        | 22        | 54         | 247        | 265        | na         | na         | na         |
| Mixed Plastics*                              |      |      |            |           |            |            |            |            |            |            |            |           |            | 48         | 32         | 38         | 46         | 57         |
| Film Plastic                                 | (5)  | (12) | 7          | 26        | 0          | 8          | 55         | 148        | 137        | 51         | 35         | 3         | 13         | 25         | 23         | 14         | 29         | 48         |
| Aluminum Cans                                | 1595 | 1608 | 1893       | 1700      | 1709       | 1619       | 1772       | 1763       | 2169       | 2065       | 1904       | 1215      | 1591       | 1790       | 1516       | 1523       | 1783       | 1570       |
| Steel Cans                                   |      |      | 52         | 26        | 47         | 76         | 191        | 116        | 141        | 168        | 245        | 89        | 263        | 335        | 277        | 257        | 299        | 193        |
| Glass (mixed)                                | (25) | (20) | (15)       | (15)      | (15)       | (19)       | (12)       | (31)       | (31)       | (31)       | (24)       | (18)      | (15)       | (11)       | (18)       | (22)       | (22)       | (29)       |
| <b>Composite Index</b>                       |      |      | <b>134</b> | <b>95</b> | <b>113</b> | <b>114</b> | <b>131</b> | <b>124</b> | <b>111</b> | <b>145</b> | <b>150</b> | <b>80</b> | <b>124</b> | <b>169</b> | <b>118</b> | <b>107</b> | <b>117</b> | <b>106</b> |
| <b>Fibre Composite Index<sup>6</sup></b>     |      |      |            |           |            |            |            |            |            |            |            |           |            |            |            |            |            | <b>76</b>  |
| <b>Container Composite Index<sup>7</sup></b> |      |      |            |           |            |            |            |            |            |            |            |           |            |            |            |            |            | <b>194</b> |

\* The composition for mixed plastics varies from each municipality based on the range of materials accepted and the specifications from their end markets.

Notes:

- Prices are for baled post-consumer residential materials, except glass, which is loose.
- As of May 2012, prices for all materials are FOB the municipality including glass. Prior to May 2012, prices for glass
- Prices are compiled from a range of municipal programs across Ontario combined with information from industry representatives. Prices may not be the same as actual prices being paid in any given program.
- The Composite Index is calculated using the overall composition of residential Blue Box material recovered and marketed in Ontario as reported from the approved 2013 WDO Datacall with some additional allocations to material categories. Mixed glass includes coloured glass. Composition figures are updated annually. Details available upon request.
- Materials with a listed price of "na" indicate either an insufficient number of municipalities reported a price in the given month (<4) or variation in the reported price which is not considered representative of Ontario
- The Fibre Composite Index is calculated using ONP#8, Mixed Paper / ONP#6, Corrugated (OCC), Hardpack (OBB/OCC), and Boxboard (OBB).
- Polycoat containers are included in the container composite index and NOT the fibre composite index.

*This Project has been delivered with the assistance of the Continuous Improvement Fund.*



This Project is Produced by Reclay StewardEdge

For more information please contact:

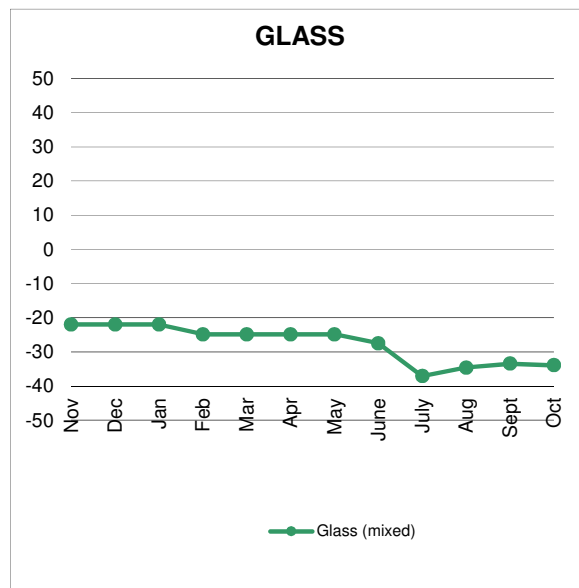
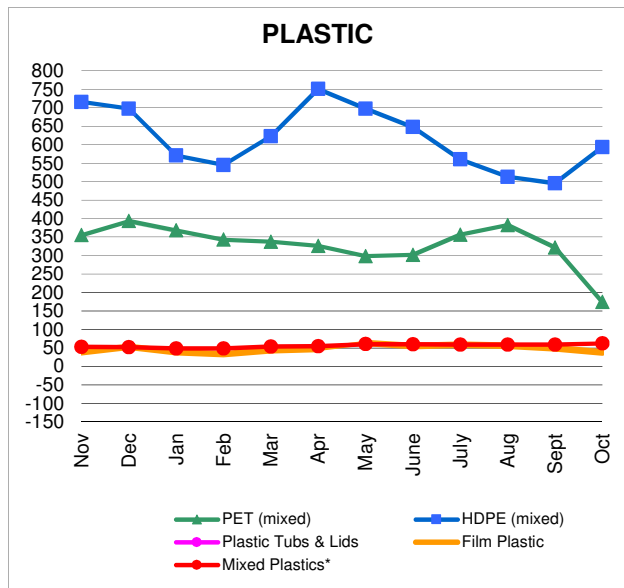
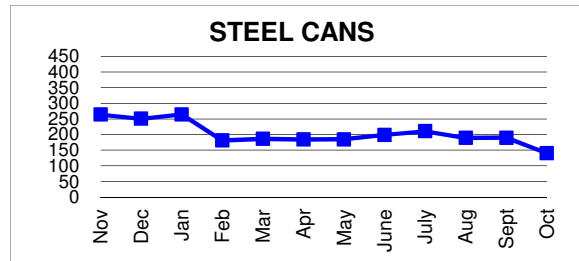
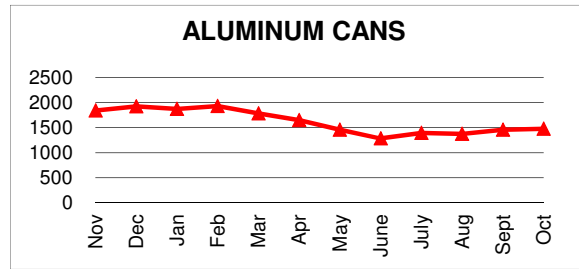
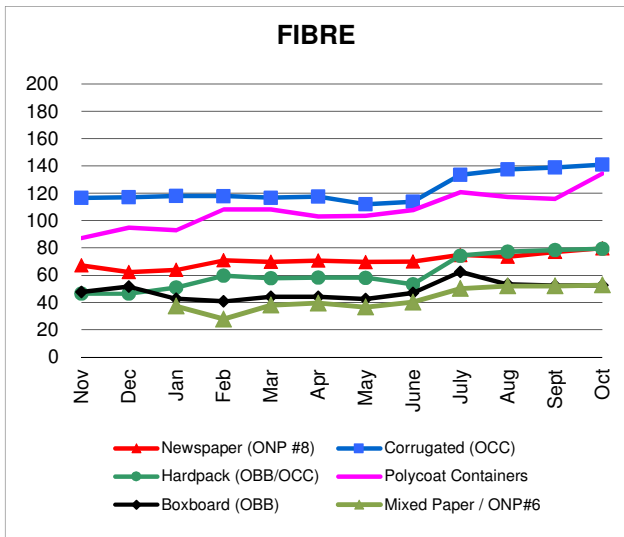
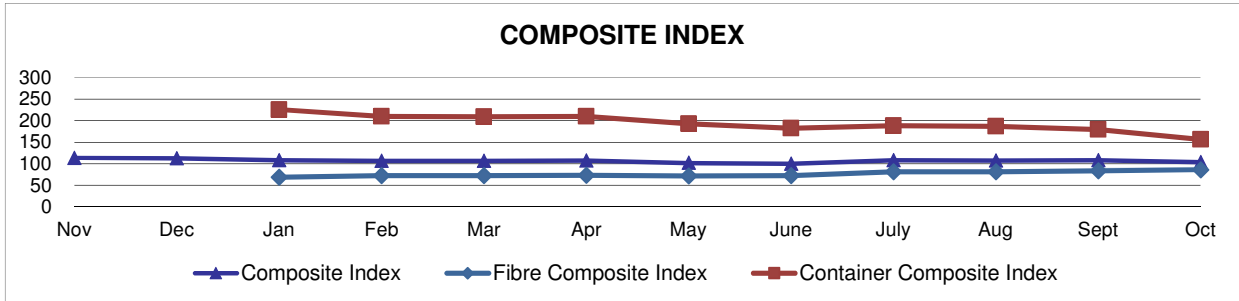
Neil Menezes at 416-644-8349 (Toll-Free: 888-277-2762, Ext. 3989) email: nmenezes@reclaystewardedge.com

Reclay StewardEdge, 26 Wellington Street East, Suite 601, Toronto, Ontario, M5E 1S2

Past editions of *The Price Sheet* are archived on the Reclay StewardEdge website at: <http://reclaystewardedge.com/resources/rse-ontario-price-sheet/>

# Price Sheet

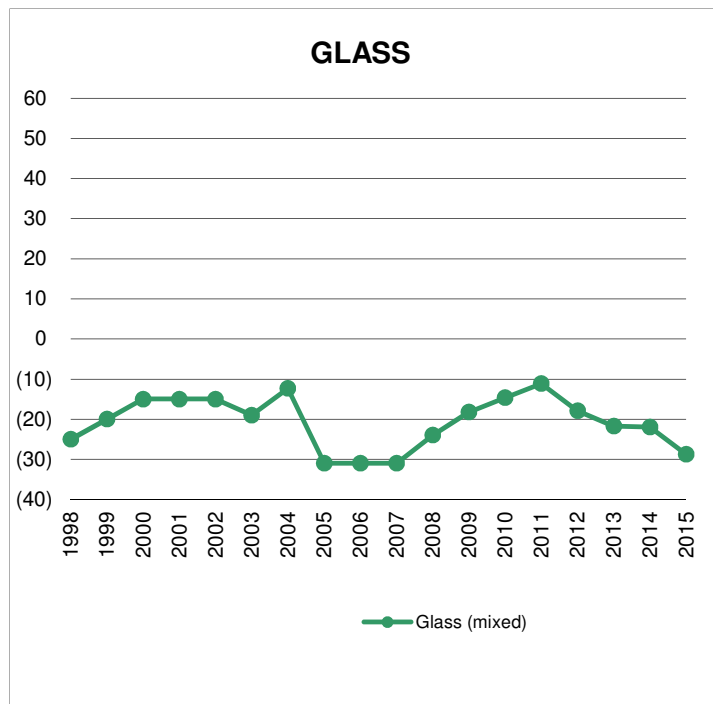
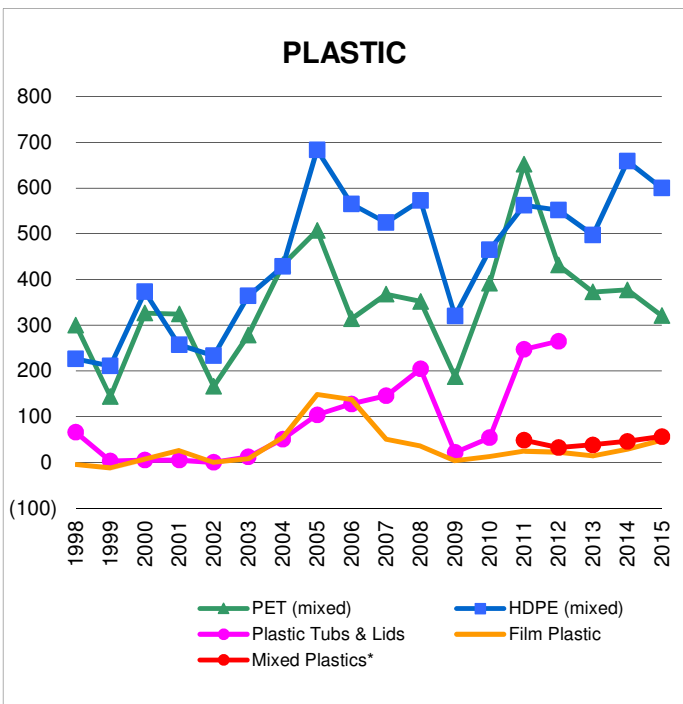
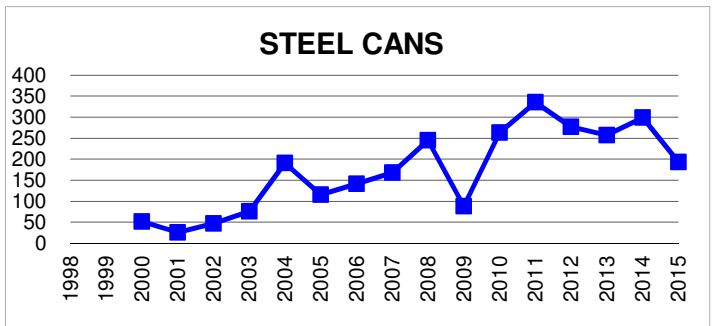
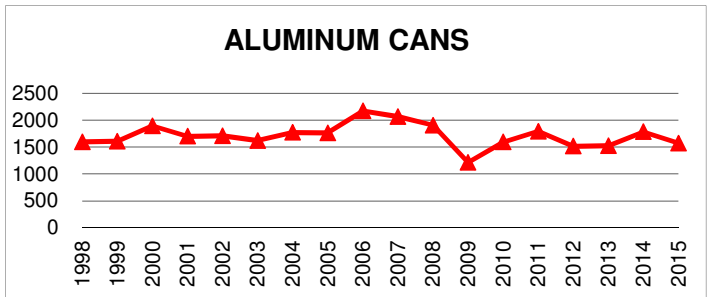
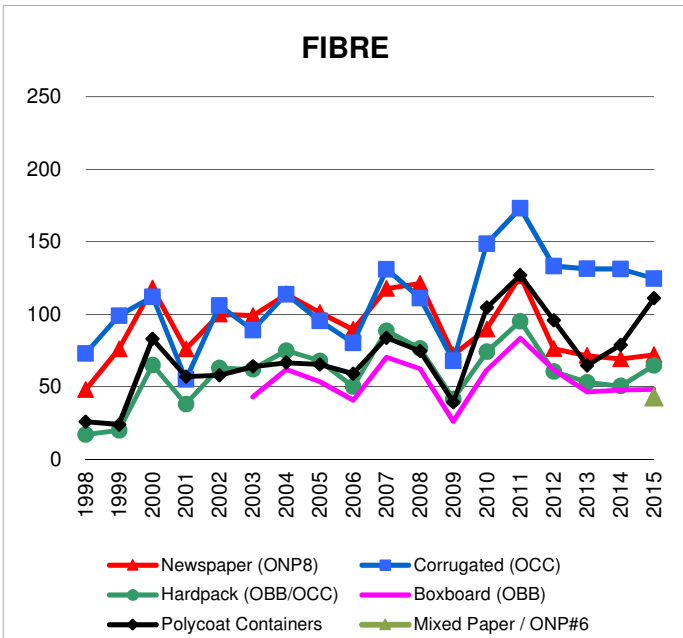
Ontario Monthly Averages from November 2014 to October 2015  
(CDN\$/Metric Tonne)



Graphs produced from Monthly Averages Table.

# Price Sheet

## Ontario Historical Yearly Averages (CDN\$/Metric Tonne)



Graphs produced from Yearly Averages Table