

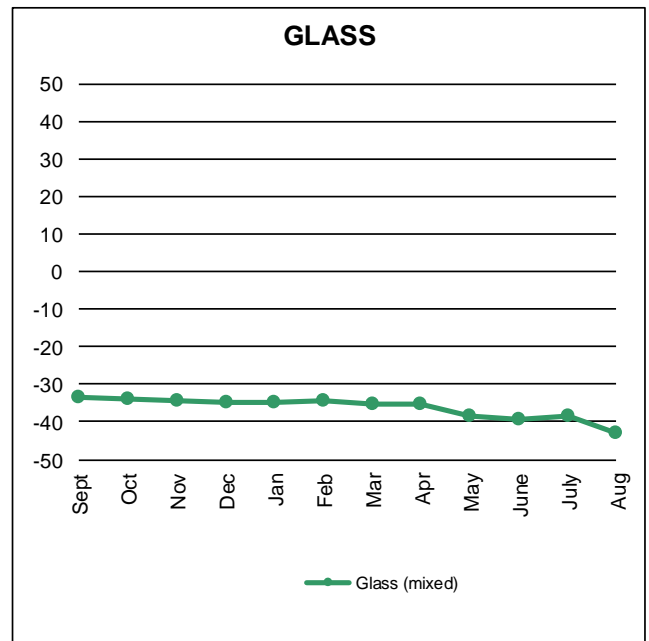
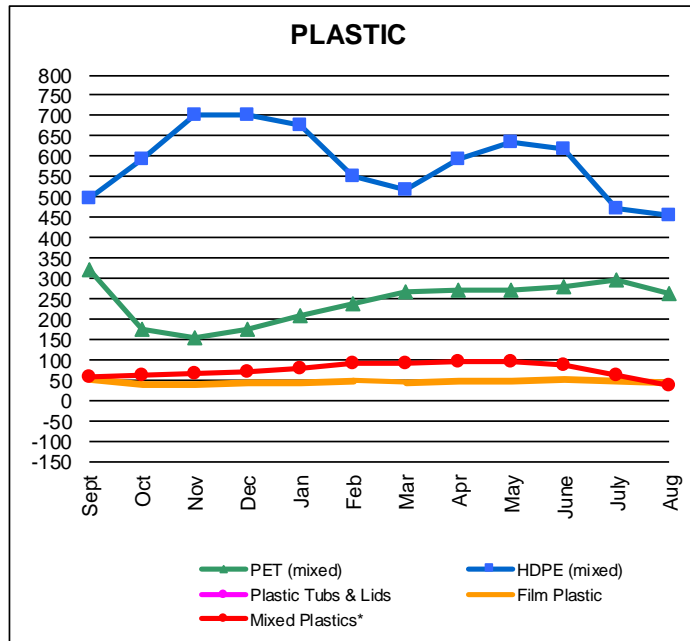
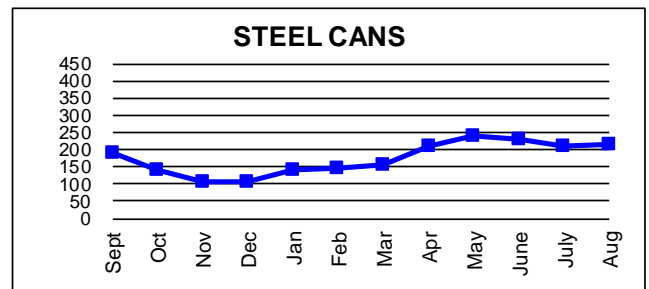
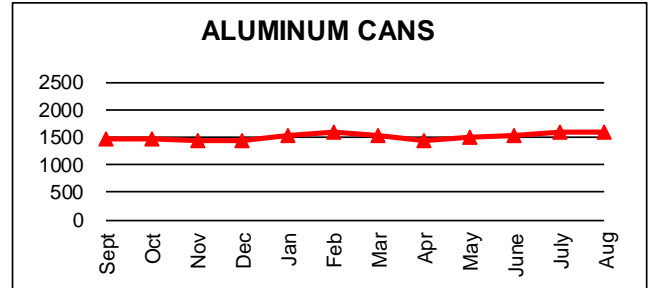
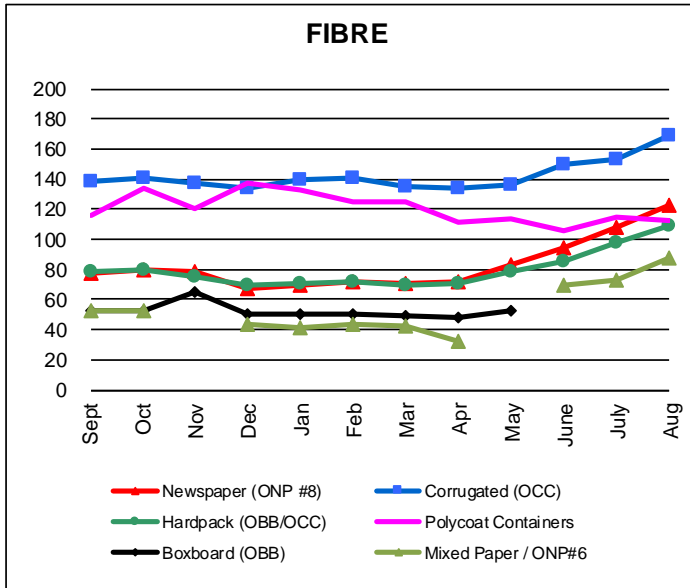
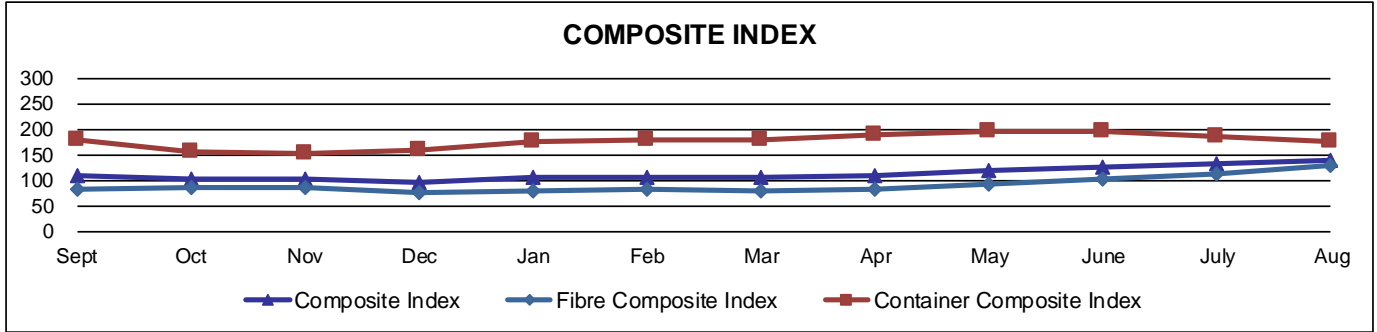
MONTHLY AVERAGES (CDN\$/Metric Tonne)																		
	Mar 2015	Apr 2015	May 2015	June 2015	July 2015	Aug 2015	Sept 2015	Oct 2015	Nov 2015	Dec 2015	Jan 2016	Feb 2016	Mar 2016	Apr 2016	May 2016	June 2016	July 2016	Aug 2016
Newspaper (ONP #8)	70	71	70	70	75	74	77	80	78	68	70	72	71	72	83	95	108	122
Mixed Paper / ONP#6	38	40	37	40	50	52	52	53	na	43	41	43	43	32	na	70	73	88
Corrugated (OCC)	117	117	112	114	133	137	139	141	138	134	140	141	135	133	136	149	154	169
Hardpack (OBB/OCC)	58	58	58	53	74	77	78	79	75	70	71	72	70	70	79	85	98	109
Boxboard (OBB)	44	44	43	47	63	53	53	53	64	50	50	50	49	48	53	na	na	na
Polycoat Containers	108	103	103	108	121	117	116	134	120	138	133	125	125	112	114	106	115	112
PET (mixed)	337	326	298	301	356	382	322	174	154	176	206	239	265	269	269	278	295	263
HDPE (mixed)	623	751	698	648	560	513	496	593	704	702	676	550	516	594	635	620	470	455
Plastic Tubs & Lids	na	na	na	na	na	na	na	na	na	na	na	na	na	na	na	na	na	na
Mixed Plastics*	54	55	60	60	59	59	59	62	64	70	78	91	91	95	95	87	62	35
Film Plastic	43	47	63	55	58	56	49	37	37	43	44	48	43	49	47	52	47	42
Aluminum Cans	1787	1653	1457	1284	1394	1377	1460	1479	1432	1440	1540	1584	1522	1450	1499	1524	1578	1576
Steel Cans	186	184	185	199	211	189	190	140	108	108	143	146	158	210	238	228	212	214
Glass (mixed)	(25)	(25)	(25)	(27)	(37)	(35)	(33)	(34)	(35)	(35)	(35)	(34)	(35)	(35)	(39)	(39)	(38)	(43)
Composite Index	107	108	102	100	108	108	108	104	103	96	106	107	106	109	118	127	132	140
Fibre Composite Index⁶	73	74	72	72	81	81	84	86	86	76	81	83	81	81	91	103	113	128
Container Composite Index⁷	209	210	193	183	189	187	180	156	154	159	177	178	179	189	196	196	187	175

YEARLY AVERAGES (CDN\$/Metric Tonne)																		
	1999	2000	2001	2002	2003	2004	2005	2006	2007	2008	2009	2010	2011	2012	2013	2014	2015	2016
Newspaper (ONP8)	76	118	76	100	99	114	101	89	118	121	72	90	126	76	71	69	72	87
Mixed Paper / ONP#6																	43	56
Corrugated (OCC)	99	112	55	106	89	114	95	80	131	111	68	149	173	133	131	131	127	145
Hardpack (OBB/OCC)	20	65	38	63	62	75	68	50	89	76	42	74	95	61	53	51	66	82
Boxboard (OBB)					43	62	53	41	70	62	26	61	84	62	46	48	50	50
Polycoat Containers	24	83	57	58	64	67	66	59	84	75	39	105	127	96	65	79	114	118
PET (mixed)	144	326	324	166	278	432	507	314	368	352	187	391	652	431	372	377	295	261
HDPE (mixed)	211	373	257	233	364	428	683	565	524	573	320	464	562	552	497	659	617	564
Plastic Tubs & Lids	3	5	5	0	12	51	104	128	146	204	22	54	247	265	na	na	na	na
Mixed Plastics*													48	32	38	46	58	79
Film Plastic	(12)	7	26	0	8	55	148	137	51	35	3	13	25	23	14	29	47	47
Aluminum Cans	1608	1893	1700	1709	1619	1772	1763	2169	2065	1904	1215	1591	1790	1516	1523	1783	1548	1534
Steel Cans		52	26	47	76	191	116	141	168	245	89	263	335	277	257	299	179	194
Glass (mixed)	(20)	(15)	(15)	(15)	(19)	(12)	(31)	(31)	(31)	(24)	(18)	(15)	(11)	(18)	(22)	(22)	(30)	(37)
Composite Index		134	95	113	114	131	124	111	145	150	80	124	169	118	107	117	105	118
Fibre Composite Index⁶																	77	95
Container Composite Index⁷																	188	185

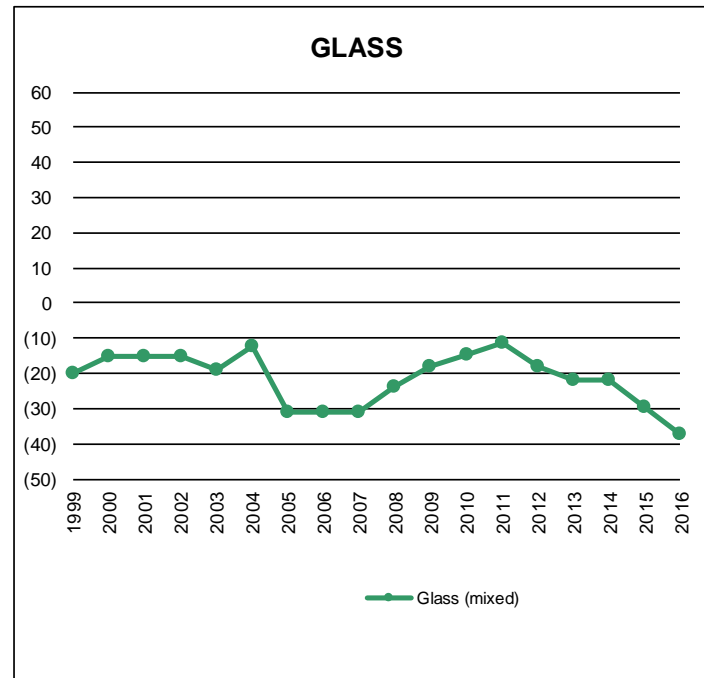
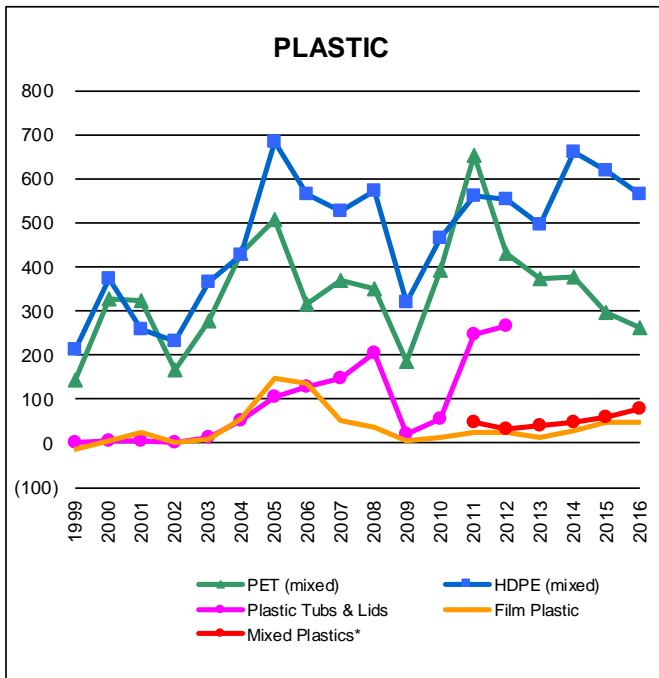
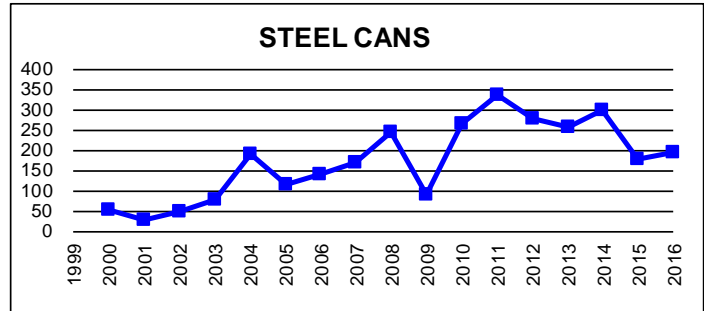
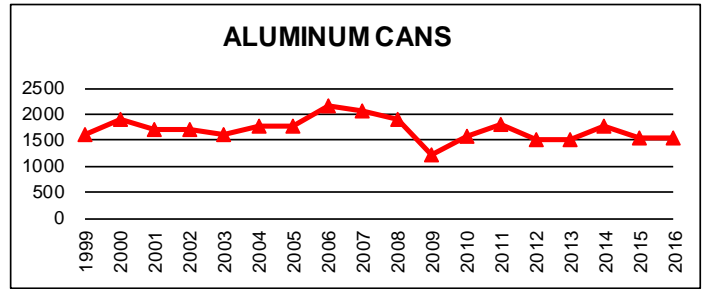
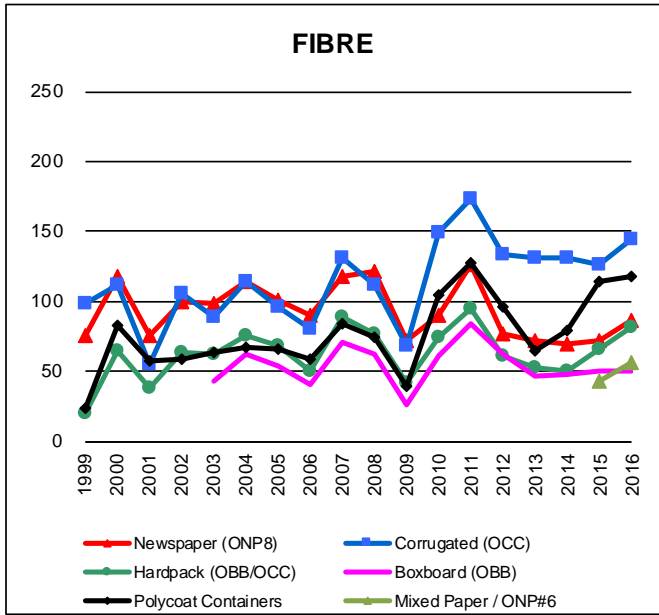
*The composition for mixed plastics varies from each municipality based on the range of materials accepted and the specifications from their end markets.

Notes:

- Prices are for baled post-consumer residential materials except glass, which is loose.
- As of May 2012, prices for all materials are FOB the municipality including glass. Prior to May 2012, prices for glass were delivered prices.
- Prices are compiled from a range of municipal programs across Ontario combined with information from industry representatives. Prices may not be the same as actual prices being paid in any given program.
- The Composite Index is calculated using the overall composition of residential Blue Box material recovered and marketed in Ontario as reported from the approved 2014 WDO Datacall with some additional allocations to material categories. Mixed glass includes coloured glass. Composition figures are updated annually. Details available upon request.
- Materials with a listed price of "NA" indicate either an insufficient number of municipalities reported a price in the given month (<4) or variation in the reported price which is not considered representative of Ontario.
- The Fibre Composite Index is calculated using ONP#8, Mixed Paper (ONP#6), Corrugated (OCC), Hardpack (OBB/OCC), and Boxboard (OBB).
- Polycoat containers are included in the container composite index and NOT the fibre composite index.



Graphs produced from Monthly Averages Table.



Graphs produced from Yearly Averages Table